



Shenzhen Eton Automation Equipment Co., Ltd.
smtmountingmachine.com

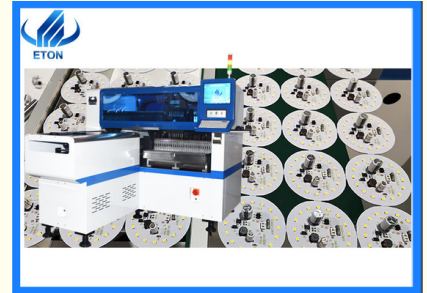
E8S-1200 High Speed LED Mounting Machine 45000CPH Dual System Dual Module 4 Cameras

Our Product Introduction

for more products please visit us on smtmountingmachine.com

Basic Information

- Place of Origin: CHINA
- Brand Name: ETON
- Certification: CE, CCC, SIRA
- Model Number: HT-E8S-1200
- Minimum Order Quantity: 1 set
- Packaging Details: vacuum adsorption, wooden packing
- Delivery Time: 30 days after receive the down-payment
- Payment Terms: T/T
- Supply Ability: 50 sets per month



Product Specification

- Warranty: 1 Year
- Applicable Components: 0402
- Name: SMT Pick And Place Machine
- Application: SMD Production Line, SMT Mounting Shooter Machine, SMT Production Line, for SMT Machine
- Condition: New, 100% Original, Brand-new
- Mounting Speed: 45000 CPH
- Type: Automatic
- Usage: Circuit Board Assembly, SMT Mounting Machine, LED
- Highlight: Dual System LED Mounting Machine, 4 Cameras LED Mounting Machine, Dual Module LED Mounting Machine



More Images



Product Description

E8S-1200 LED Pick and Place Machine: 45000CPH, Dual System, Dual Module, 4 Cameras

1.HT- E8S - 1200 semi - automatic production line is suitable for mounting all kinds of LED lights and circuit boards For example: LED bulb, DOB bulb Panel lamp, Down-light, Lamp tube, Street lamp, Display screen, Circuit board and Other products.

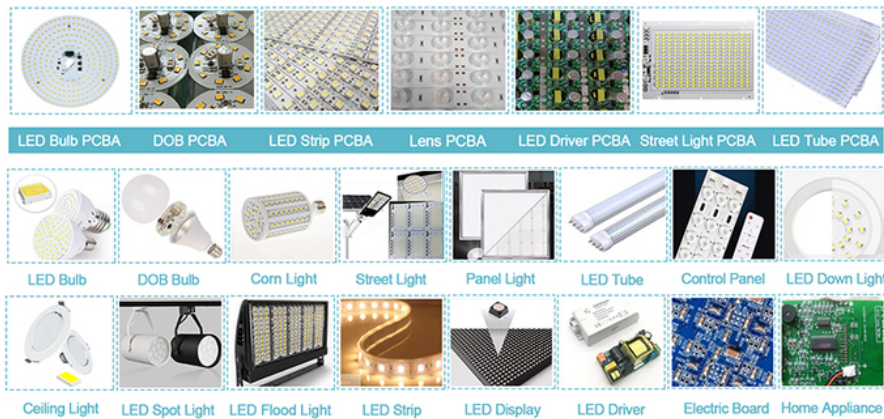
2.HT-E8S-1200 SMT Line Maximum PCB size is 1200 * 350mm
(HT-E8S-1200 Maximum PCB Width could be adjust to 500mm)

Technical parameter

Model	HT-E8S-1200
Dimension	
Length	2550 mm
Width	1650 mm
Height	1550 mm
Total Weight	1700 kg
PCB	
PCB Length Width	Max:1200*500mm Min:100*100mm
PCB Thickness	0.5-5mm
PCB Clamping	Adjustable pressure pneumatic
Mounting Mode	Group picking and separate placingseparate picking and separate placing
O.S.	
System	Windows7
Software	R&D independently
Display	Touch screen monitor
Input Device	Keyboard, Mouse
Vision System	
No. of Camera	2 sets of imported camera Vision for the flight identification, MARK correction
Mounting Speed	45000 CPH
Components	LED , capacitors, resistors, IC,shaped components, etc.
No. of Feeders Station	28 PCS
No. of nozzles	12 PCS
X,Y,Z Axis Drive way	High-end magnetic linear motor + Servo motor
Feeding way	Electric feeder with double motor

Application

Applications



Exhibition

Our company participates in many exhibitions at home and abroad every year,

You will see ETON's booth in some well-known large-scale exhibitions in China, including large-scale exhibitions held in Shenzhen, Guangzhou, Chongqing, Shanghai and other places.

Foreign exhibitions include exhibitions in more than 20 countries including Mumbai, Delhi, Egypt, Turkey, and Vietnam.

Our products are exported to more than **30** countries & regions
Such as South Korea, Turkey, Egypt, India, Russia, America, Brazil, Tunisia, Poland, Lithuania, South Africa, Iran, Vietnam, Pakistan, Saudi Arabia, Uzbekistan, Nigeria, Germany, etc.

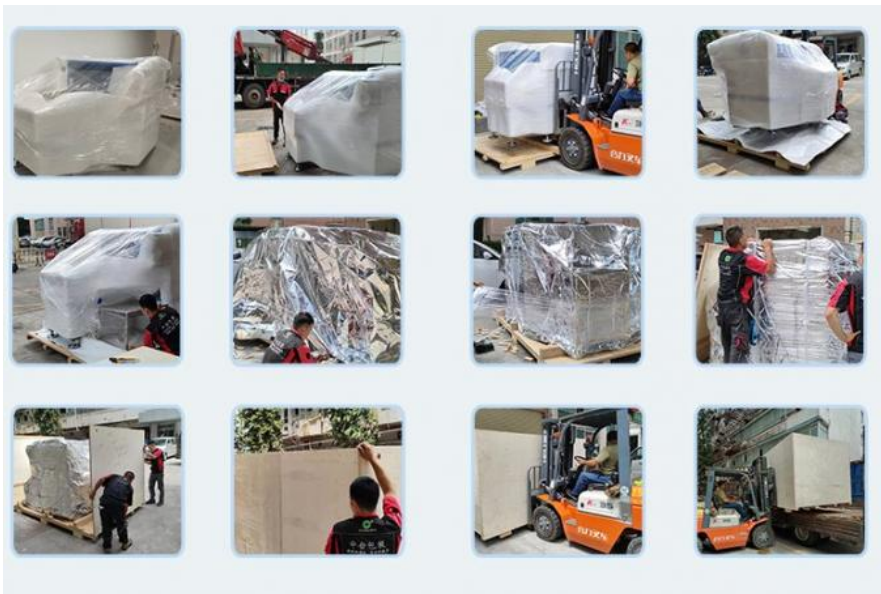
NVC	PAK	SKYQURO	SURYA	Calcom
POLYCAB	orient electric	KONARK	RongDong	RK
FSL	PHILIPS	KENDAL	MLS	TCL

Shipping and Delivery

Land transportation: suitable for inland countries and it is affordable;

Air freight: for urgent good, and it is the most expensive transportation way;

Shipping: It's suitable for heavy goods, and the convenience and lower cost of shipping which is easy for clients to accept the arrival time of the goods.



FAQ

Q: Do you have a product certification certificate?

A: Our products have CCC, CE, SRIA certification.

Q: How about the after-sale service? How about the warranty?

A: We have a team of professional engineers to solve your problems. Any parts that require repair and replacement are free of charge during the warranty period. We can also provide you with training and on-site installation, and support remote control of the machine, the machine uses Chinese and English interface, very easy to operate.

Q: Are you a trade company or a manufacturer?

We are an professional manufacturer specialized in Screen Printer,SMT Machine, Pick and Place Machine, Reflow Oven, SMT Production line and other SMT Products.

Contact David

Whatsapp/Wechat/Tel: **+86 13827425982**

E-mail: **david@eton-mounter.com**



Shenzhen Eton Automation Equipment Co., Ltd.



0086 13670197725 (Whatsapp/Wechat)



linda@eton-mounter.com



smtmountingmachine.com

HENGFENG INDUSTRIAL AREA,ZHOUSHI ROAD NO. 739,HEZHOU COMMUNITY,HANGCHENG STREET,BAOAN,SHENZHEN,CHINA