



HT-F7S SMT Mounting Machine Windows 7 System Adjustable pressure pneumatic

Our Product Introduction

for more products please visit us on smtmountingmachine.com

Basic Information

- Place of Origin: CHINA
- Brand Name: ETON
- Certification: CE, CCC, SIRA
- Model Number: HT-F7S
- Minimum Order Quantity: 1 set
- Packaging Details: vacuum adsorption, wooden packing
- Delivery Time: 30 days after receive the down-payment
- Payment Terms: T/T
- Supply Ability: 50 sets per month



Product Specification

- Warranty: 1 Year
- Applicable Components: 0402
- Name: SMT Pick And Place Machine
- Application: SMT Production Line
- Power Supply: AC220V 50Hz
- Condition: New, 100% Original, Brand-new
- Mounting Speed: 180000 CPH
- Type: Automatic
- Usage: SMT Mounting Machine
- Feeders: 68
- Highlight: **SMT Mounting Machine Windows 7, Adjustable Pressure SMT Mounting Machine, Adjustable Pressure SMT Mounter**



More Images



Product Description

HT-F7S SMT Mounting Machine for LED3014/3020/3528/5050 & Capacitors

Technical parameter

Model	HT-F7S
PCB size(L* W)	1200*330mm Min 100*100mm
PCB Thickness	0.5-5mm
PCB Clamping	Adjustable pressure pneumatic
Mounting mode	Group to take and group to mount
System	Windows 7
Software	R&D Independently
Components	LED3014/3020/3528/5050,capacitors,resistors,bridge rectifiers etc
No.of feeders station	68PCS
No.of nozzles	34PCS

SMT Line solution

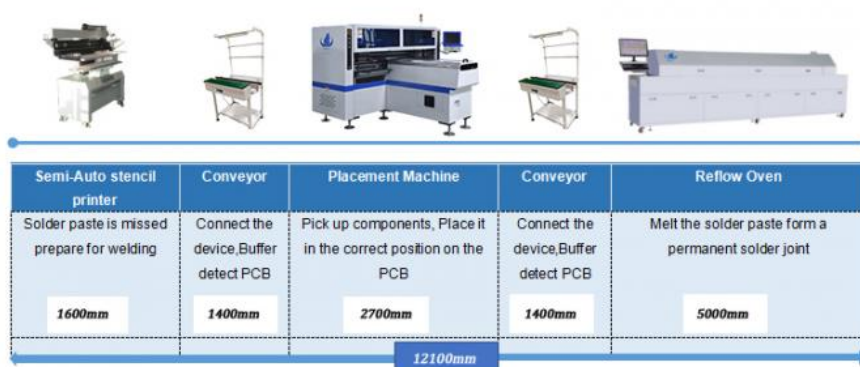
The equipment required for the semi-automatic production line includes:

Semi-automatic printing machine: the solder paste is printed on the PCB pad through the stencil;

Pick and place machine: mount the led chips or other components on the designated position on the PCB board;

Reflow oven: melting the solder paste to make it adhere to the mounting components;

Conveyor: inspect the placement and soldering quality, and also play a role in transferring PCB boards and buffering on the SMT production line



Certificates

As an experienced manufacturer in SMT machine, we obtained a number of intellectual property technologies, including 9 invention patents, 112 practical patents, 12 software copyrights, with our won R&D department for production and inspection. And also earned the oversea certificates as CE, CCC, SIRA, etc.

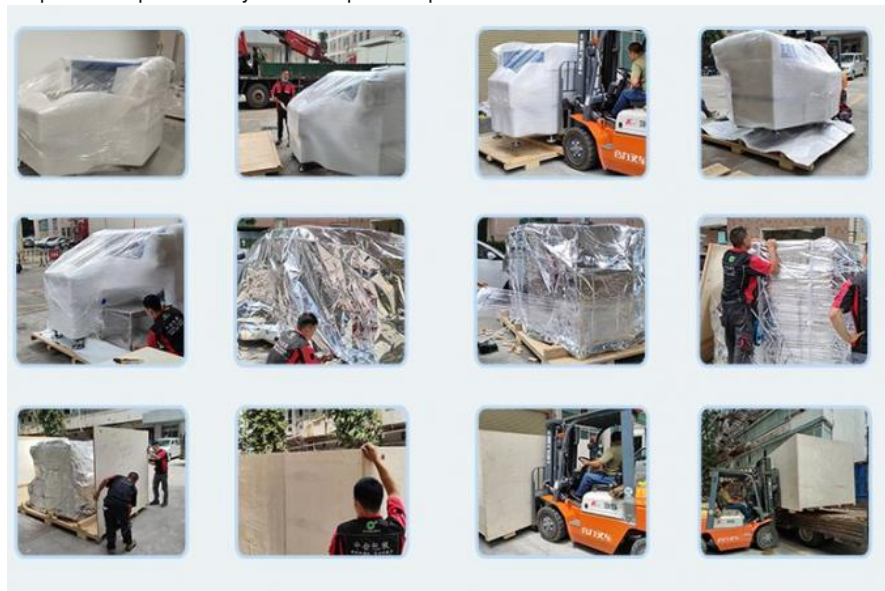
Our Exhibitions

Eton has participated in many exhibitions of foreign countries , such as India Mumbai Exhibition, India Delhi Exhibition, Egypt Exhibition, Turkey Exhibition, Pakistan Exhibition, etc and trading with more than 20 countries. Furthermore, we have took part in our domestic large exhibition, like Guangzhou Guangya Exhibition, Shanghai Munich Exhibition, Chongqing LED light Exhibition, etc.



Packages

- Step 1: Packing in film package to prevent dust and water to the machine
- Step 2: Packing in foam cotton to protect the outside of the machine
- Step 3: Packing in vacuum package to keep dry of the machine during transportation
- Step 4: Transportation by truck to specified port



FAQ

Q. What is your merits of the machine to others production?

A. Initially, we have a strong R&D department for studying our productions, and our clients can enjoy free up-grade of the machine to get latest information about technology and equipment, besides, we have a 52000 square meters industrial park to serve the production, assembly, and commissioning of our machines.

Q. How can I contact you to buy the goods in an efficient way?

A. Making enquiry of the products you want on the trading platform of Alibaba, Tradelink, foreign trade Express, or contact us with the social software as Whatsapp, Skype, etc.

Q. Can you accept CIF as the quoted price?

A. We usually accept EXW as the quoted price.

Contact David

Whatsapp/Wechat/Tel: +86 13827425982

E-mail: david@eton-mounter.com



Shenzhen Eton Automation Equipment Co., Ltd.



0086 13670197725 (Whatsapp/Wechat)



linda@eton-mounter.com



smtmountingmachine.com

HENGFENG INDUSTRIAL AREA,ZHOUSHI ROAD NO. 739,HEZHOU COMMUNITY,HANGCHENG
STREET,BAOAN,SHENZHEN,CHINA