



Dual System Multifunctional Pick & Place Machine 90000CPH SMT Mounting Machine

Our Product Introduction

for more products please visit us on smtmountingmachine.com

Basic Information

- Place of Origin: CHINA
- Brand Name: ETON
- Certification: CE, CCC, SIRA
- Model Number: HT-E8D-1200
- Minimum Order Quantity: 1 set
- Packaging Details: vacuum adsorption, wooden packing
- Delivery Time: 30 days after receive the down-payment
- Payment Terms: T/T
- Supply Ability: 50 sets per month



Product Specification

- Warranty: 1 Year
- Applicable Components: 0402
- Name: SMT Pick And Place Machine
- Condition: New, 100% Original, Brand-new
- Product Name: Place Machine\ LED Mounter\ LED Assembly Machine
- Mounting Speed: 90000 CPH
- Usage: Circuit Board Assembly, SMT Mounting Machine, SMD, LED
- Feeders: 48
- Tape Width: 24mm, 8mm, 12mm
- Highlight: Dual System Pick & Place Machine, 90000 CPH Pick & Place Machine, Pick & Place SMT Mounting Machine



More Images



Product Description

Dual System Multifunctional Pick & Place Machine - HT-E8D-1200 90000CPH

Production Introduction of Pick And Place Machine HT-E8D-1200

HT-E8D-1200 dual module multifunctional pick and place machine can produce two different products at same time taking the mounting mode of group picking and separately placing, separately picking and separately placing. It's feeding way is electric feeder with double motor with 24 PCS of head and 48 PCS of feeders station capacity can reaches 90000 CPH.

HT-E8D of Technical Parameter

Dimension	3150*2250*1650mm
PCB Size	Max: 1200*300mm Min: 100*100mm
PCB Thickness	0.5~5mm
Mounting mode	Group picking and separately placing, separately picking and separately placing
Mounting precision	±0.04mm
Mounting height	<15mm (Automatic changing)
Mounting speed	90000 CPH
No.of camera	4 sets Vision for the flight identification, Mark correction
Components space	0.2mm
No.of feeders station	48 PCS
No.of head	24 PCS
Transmission direction	Both direction(option)
Transmission mode	Auto online drive
Operating environment	23°C±3°C

Application

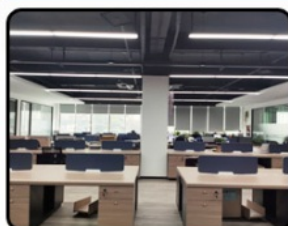
Dual system, dual module multifunctional mounter to produce two different products at same time.

Component: Min. size 0402 Max. height 15mm.

Application: Power drive, electric board, lens, DOB bulb, linear bulb, household appliance, etc.

Company Introduction

SHENZHEN Office



ETON Industrial Park



50,000 square meters



7 buildings



300 employees



assembly line



CNC workshop



Production line Exhibition hall

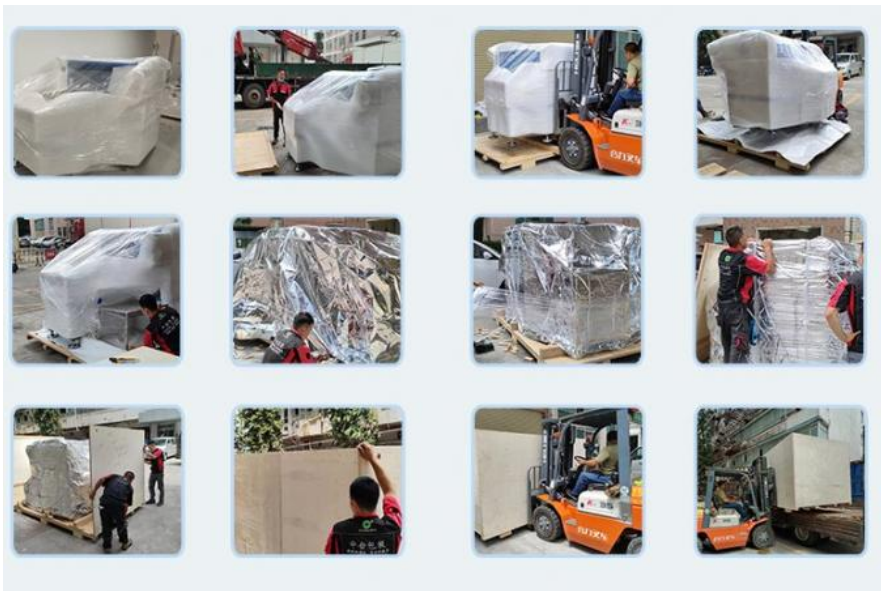
ETON founded on November 11, 2011, business scope includes general business items: SMT, LED high-speed SMT machine, LED packaging and testing equipment, SMT related ancillary equipment, PCB testing equipment, AUTOMATION EQUIPMENT R & D and sales.

Packaging

Filming packing: Make the machine sanitary, clean, sealed packaging, dust and humidity; have good shock resistance, impact resistance, and good protection performance with tightness and fixity.

vacuum packing: Advantages of moisture proof, dust proof and so on.

wooden packing: It has good cushioning performance, corrosion resistance, high strength and hygroscopicity, moisture-proof and earthquake-resistant functions.



Service



1. Before sales

Our sales specialist will analyze and recommend the equipment and production line best for you and Provide exclusive and customized services.

2. Under sales

Specialist sale tracks the equipment production and transport situation in time, ensure that the equipment arrives at customers in good condition, and provide professional technical guidance for equipment assembly, and part of areas provide door-to-door service for overseas engineers.

3. after sales

One-year warranty period, sales specialist to answer questions online 24 hours; regularly visit customers to understand the working status of equipment.

FAQ

Q: Do you have oversea after sale service?

A: We can offer technical support abroad. If you in India, Turkey and Egypt, we have local engineers will support you fast.

Q: How is the installation and training?

A: After buying our machines, our engineer will visit to your factory installation and training for free.

Q: It's hard to use the machine?

A: No, not at all. For our previous clients, at most 5 days is enough to learn to operate the machines.

Q: Does your machines have quality certificates?

A: We are high-tech enterprise with CE, SIRA, CCC, ISO awarded as "Well-know brand" and many technology patents, and have rich experience (more than 8 years) in LED light production line program.

Q: What's the terms of payment? What about the trade term?

A: T/T is OK. You can choose FOB Shenzhen.

Contact David

Whatsapp/Wechat/Tel: **+86 13827425982**

E-mail: **david@eton-mounter.com**





0086 13670197725 (Whatsapp/Wechat)



linda@eton-mounter.com



smtmountingmachine.com

HENGFENG INDUSTRIAL AREA,ZHOUSHI ROAD NO. 739,HEZHOU COMMUNITY,HANGCHENG
STREET,BAOAN,SHENZHEN,CHINA