



Shenzhen Eton Automation Equipment Co., Ltd.
smtmountingmachine.com

ETON HT-E8D-1200 Pick & Place Machine With 24 Heads & 48 Feeders 90000CPH

Our Product Introduction

for more products please visit us on smtmountingmachine.com

Basic Information

- Place of Origin: CHINA
- Brand Name: ETON
- Certification: CE, CCC, SIRA
- Model Number: HT-E8D-1200
- Minimum Order Quantity: 1 set
- Packaging Details: vacuum adsorption, wooden packing
- Delivery Time: 30 days after receive the down-payment
- Payment Terms: T/T
- Supply Ability: 50 sets per month



Product Specification

- Warranty: 1 Year
- Applicable Components: 0402
- Name: SMT Pick And Place Machine
- Condition: New, 100% Original, Brand-new
- Product Name: Place Machine\ LED Mounter\ LED Assembly Machine
- Mounting Speed: 90000 CPH
- Usage: Circuit Board Assembly, SMT Mounting Machine, SMD, LED
- Feeders: 48
- Tape Width: 24mm, 8mm, 12mm
- Highlight: ETON Pick & Place Machine, Pick & Place Machine With 24 Heads, Pick Place Machine 90000CPH



More Images



Product Description

Dual System Multifunctional Pick & Place Machine - HT-E8D-1200 90000CPH

Production Introduction of Pick And Place Machine HT-E8D-1200

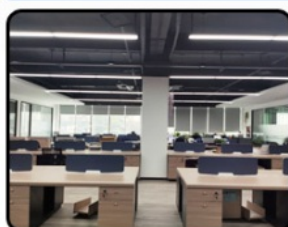
HT-E8D-1200 dual module multifunctional pick and place machine can produce two different products at same time taking the mounting mode of group picking and separately placing, separately picking and separately placing. It's feeding way is electric feeder with double motor with 24 PCS of head and 48 PCS of feeders station capacity can reaches 90000 CPH.

HT-E8D of Technical Parameter

Dimension	3150*2250*1650mm
PCB Size	Max: 1200*300mm Min: 100*100mm
PCB Thickness	0.5~5mm
Mounting mode	Group picking and separately placing, separately picking and separately placing
Mounting precision	±0.04mm
Mounting height	<15mm (Automatic changing)
Mounting speed	90000 CPH
No.of camera	4 sets Vision for the flight identification, Mark correction
Components space	0.2mm
No.of feeders station	48 PCS
No.of head	24 PCS

Company Introduction

SHENZHEN Office



ETON Industrial Park



50,000 square meters



7 buildings



300 employees



assembly line



CNC workshop



Production line Exhibition hall

Our company set up 2011, is a famous for the top technology of high speed pick and place machine, meanwhile is a leading manufacturer of automatic high-speed pick and place machine focusing on High efficiency Low consumption. We rated as Shenzhen high-tech enterprise, China high-tech enterprise, Shenzhen TOP Brand, 2015 LED Technology Innovation Aware, The 4th China LED first Innovation Aware, and so on.

Certificates

Strong production capacity, ETON have more than 50000 square meter Industrial park in Jiangxi Province, machine capacity more than 50 units/month.

133 invention patents and property technology patents, including We got 9 invention Patents, 112 practical patents, 12 software copyrights.

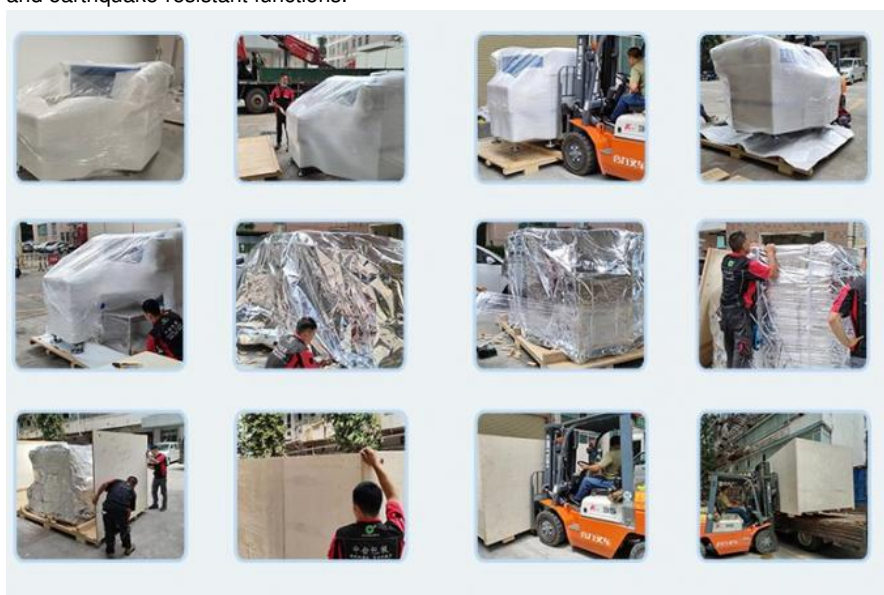


Packaging

Filming packing: Make the machine sanitary, clean, sealed packaging, dust and humidity; have good shock resistance, impact resistance, and good protection performance with tightness and fixity.

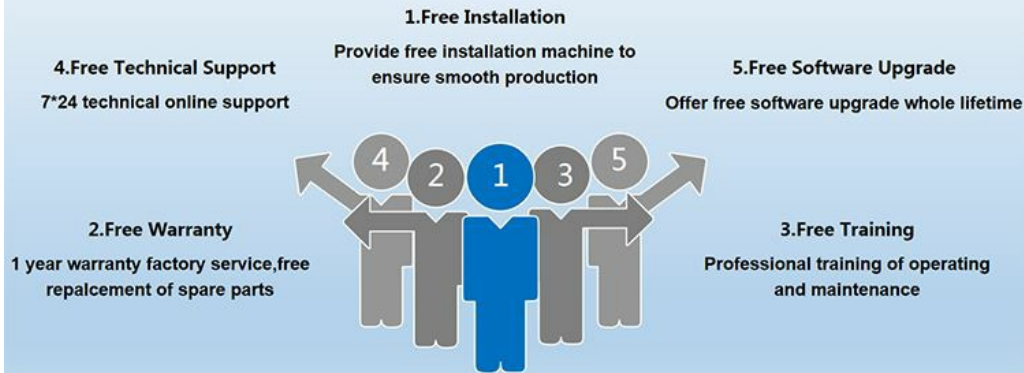
vacuum packing: Advantages of moisture proof, dust proof and so on.

wooden packing: It has good cushioning performance, corrosion resistance, high strength and hygroscopicity, moisture-proof and earthquake-resistant functions.



Service

ETON after-sales service



Company five level management policy: sincere business, focus on R&D, manufacturing intentions, considerate service, customer trust.

"no worries" after sale service concept: the pearl River Delta region to arrive within 4 hours, day to solve; Guangdong Province 24 hours.

Visit customers regularly and gather information.

Provide latest information about technology and equipment.

High service efficiency, there is service office in India. Besides India, we also have local engineers in Egypt, Turkey. Can provide you with timely services.

Chinese engineers provide online services. If necessary, Chinese engineers will come to your factory for free install and training.

Quality First, Client-oriented, Continuous Improvement.

24 hours online for you to answer.

FAQ

Can you provide a whole line solution?

Yes, we can. We can supply SMT line and some LED production lines.

Can we customize the machine?

Of course, all of our machine can be customize.

Do you have oversea after sale service?

Yes, we can provide technical support abroad. If you have any technical problems, our engineers will provide you with timely support. Abroad, we have India, Turkey and Egypt office and local engineer, etc.

This is the first time I use this kind of machine, is it easy to operate?

It is easy to operate, the language of the machine is English, and we will teach you the basic operation. If you still have any questions, please contact us by e-mail, wechat, phone, Skype, Whatsapp or other contact information.

How long the delivery?

About 30 days.

Contact David

Whatsapp/Wechat/Tel: **+86 13827425982**

E-mail: **david@eton-mounter.com**



Shenzhen Eton Automation Equipment Co., Ltd.



0086 13670197725 (Whatsapp/Wechat)



linda@eton-mounter.com



smtmountingmachine.com

HENGFENG INDUSTRIAL AREA,ZHOUSHI ROAD NO. 739,HEZHOU COMMUNITY,HANGCHENG STREET,BAOAN,SHENZHEN,CHINA