



Shenzhen Eton Automation Equipment Co., Ltd.
smtmountingmachine.com

ETON HT-E8S SMT Mounting Machine 0.04mm Precision 45000CPH For DOB/Display/Tube/Light

Our Product Introduction

for more products please visit us on smtmountingmachine.com

Basic Information

- Place of Origin: CHINA
- Brand Name: ETON
- Certification: CE, CCC, SIRA
- Model Number: HT-E8S-1200
- Minimum Order Quantity: 1 set
- Packaging Details: vacuum adsorption, wooden packing
- Delivery Time: 30 days after receive the down-payment
- Payment Terms: T/T
- Supply Ability: 50 sets per month



Product Specification

- Warranty: 1 Year
- Applicable Components: 0402
- Name: SMT Pick And Place Machine
- Condition: New, 100% Original, Brand-new
- Product Name: Place Machine\ LED Mounter\ LED Assembly Machine
- Mounting Speed: 45000 CPH
- Type: Automatic
- Usage: Circuit Board Assembly, SMT Mounting Machine, SMD, LED
- Feeders: 28
- Tape Width: 24mm, 8mm, 12mm
- Highlight: **SMT Mounting Machine 0.04mm Precision, SMT Mounting Machine For DOB Light, SMT Mounter For Display Light**



More Images



Product Description

ETON SMT Mounting Machine HT-E8S for DOB bulb, Electric Board, Power Driver, etc.

Description of Pick and Place Machine HT-E8S

The main function of SMT machine HT-E8S: Used for SMT production process to accurately mount components on PCB board fixed position.

The SMT machine uses the suction nozzle on the head to absorb various components from feeders and mount them on the PCB board.

SMT pick and place machine is the main equipment in SMT production process, which can not be replaced by other equipment.

SMT production process is the solder paste coating, component mounting, reflow welding, it is the most major process in the SMT production process. In order to get good mounting quality, SMT pick and place machine should have good mounting process in addition to good equipment.

Specification

Length	2550mm
Width	1650mm
Height	1550mm
Total weight	1700kg
PCB size	Max:1200*500mm Min:100*100mm
PCB thickness	0.5-5mm
Mounting height	<15mm
Mounting speed	45000CPH
No.of head	12PCS
Mounting precision	±0.04mm

Application

Applications



Bulb light, DOB bulb, Display, Tube light, flexible strip light, Electric board, Power driver, LED chip board, Lens, Wall light, Street light etc.

What is the position in the SMT line ?

The semi-automatic production line

Solder paste printing machine, conveyor, Pick and Place machine, reflow oven.

The full-automatic production line

PCB Loader, conveyor, transplanting machine, buffer frame, automatic printing machine, pick and place machine, belt transport guide rail, reflow oven, PCB Un-loader.



Our advantages

Shenzhen ETON Automatic Equipment Co.,Ltd. was founded in 2011. It is a manufacturing and process solution provider focusing on R&D, production, sales and service of SMT high-speed pick and place machines and SMT peripheral automation equipment.

Eton is the leading manufacturer of global optoelectronic high-speed pick and place machine, the products are exported to more than 30 countries and regions, including South Korea, India, Vietnam, Tunisia, Egypt, Turkey, Russia, Brazil etc.

Our Exhibitions

ETON is a very strong and powerful company. We attend many exhibitions every year. Not only in China, India Delhi, Indian Mumbai, Pakistan Karachi, Turkey Istanbul, Egypt Cairo, Russia Moscow, Vietnam Hanoi etc.

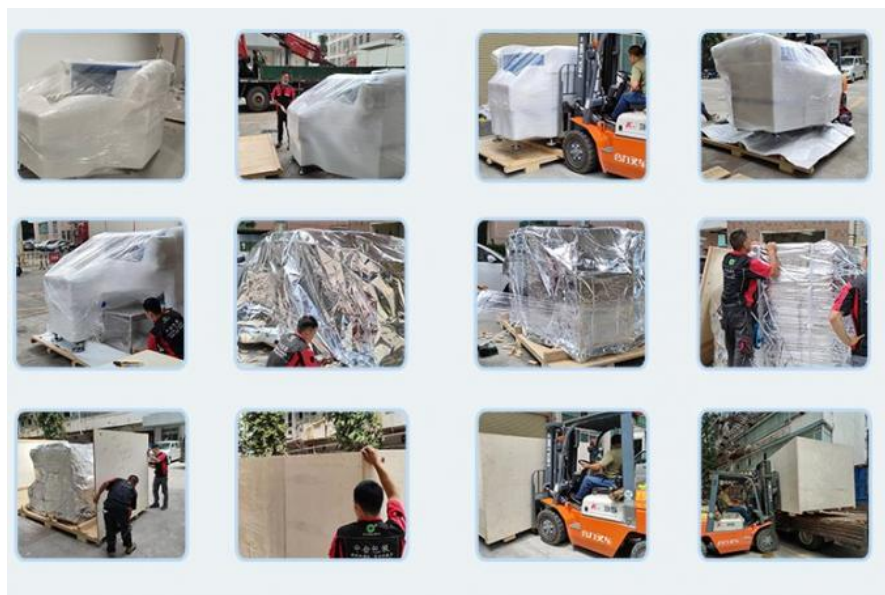
We occurred 85% percent in China LED lighting markets, but also send machines to India, Korea, UK, Russia, Egypt, Turkey, Vietnam, Japan, Australia, Poland, etc more than 20 countries.

Working with ETON is guaranteed, let's light up your business!

Package advantages

Delivery of the goods which is the most important part for us convey the good to our clients, so that the way for delivery is a vital part.

Here are the three aspect for the transportation way:



FAQ

1. Why you choose us?

We have more than 10 years experience, Independent offices have been set up in India, Turkey, Egypt and other countries to provide better services.

We obtain a number of intellectual property technologies, including 9 invention patents, 112 practical patents, 12 software copyrights. We can provide latest information about technology and equipment.

2. Is it hard to operate?

Machine is very intelligent and easy to operate, like the intelligent phone, also the software is made by our company. About 3-5 days you can operate.

3. Can you use CIF price?

CIF price need add the freight, insurance fee on the basis of EXW price, and the India delivery forwarder will charge ours more yours. So actually to do EXW will more simple and save cost for you.

4. Can we support whole SMT line?

Yes, we can provide whole line solution if you want. We are very professional on SMT field.

5. What machine can you buy from us?

We can provide a product line of SMT. Such as Multi-function placement machine, high-speed placement machine, dispensing machine, loading machine, printing machine, reflow soldering, etc.

Contact David

Whatsapp/Wechat/Tel: **+86 13827425982**

E-mail: **david@eton-mounter.com**



Shenzhen Eton Automation Equipment Co., Ltd.



0086 13670197725 (Whatsapp/Wechat)



linda@eton-mounter.com



smtmountingmachine.com

HENGFENG INDUSTRIAL AREA,ZHOUSHI ROAD NO. 739,HEZHOU COMMUNITY,HANGCHENG
STREET,BAOAN,SHENZHEN,CHINA