



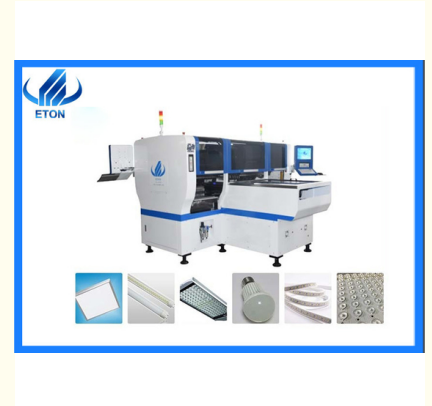
## ETON SMT Placement Machine With 90000CPH For LED DOB Making Chip Mounter

### Our Product Introduction

for more products please visit us on [smtmountingmachine.com](http://smtmountingmachine.com)

#### Basic Information

- Place of Origin: CHINA
- Brand Name: ETON
- Certification: CE, CCC, SIRA
- Model Number: HT-E8D-1200
- Minimum Order Quantity: 1 set
- Packaging Details: vacuum adsorption, wooden packing
- Delivery Time: 30 days after receive the down-payment
- Payment Terms: T/T
- Supply Ability: 50 sets per month



#### Product Specification

- Warranty: 1 Year
- Applicable Components: 0402
- Name: SMT Pick And Place Machine
- Condition: New, 100% Original, Brand-new
- Product Name: Place Machine\ LED Mounter\ LED Assembly Machine
- Mounting Speed: 90000 CPH
- Usage: Circuit Board Assembly, SMT Mounting Machine, SMD, LED
- Feeders: 48
- Tape Width: 24mm, 8mm, 12mm
- Highlight: **SMT Placement Machine For LED DOB , LED DOB Making Machine 90000CPH, LED DOB Making Chip Mounter**



#### More Images



## Product Description

### ETON SMT placemant machine With 90000CPH for led DOB making chip mounter

#### Production Introduction of Pick And Place Machine HT-E8D-1200

HT-E8D-1200 dual module multifunctional pick and place machine can produce two different products at same time taking the mounting mode of group picking and separately placing, separately picking and separately placing. It's feeding way is electric feeder with double motor with 24 PCS of head and 48 PCS of feeders station capacity can reaches 90000 CPH.

#### HT-E8D of Technical Parameter

Dimension	3150*2250*1650mm
PCB Size	Max: 1200*300mm Min: 100*100mm
PCB Thickness	0.5~5mm
Mounting mode	Group picking and separately placing,separately picking and separately placing
Mounting precision	±0.04mm
Mounting height	<15mm (Automatic changing)
Mounting speed	90000 CPH
No.of camera	4 sets Vision for the flight identification, Mark correction
Components space	0.2mm
No.of feeders station	48 PCS
No.of head	24 PCS

#### Production Line

we provide whole SMT line, such as reflow oven, printer, conveyor, pick and place machine, Loader, Unloader, glue dispenser, etc.



#### Company profile

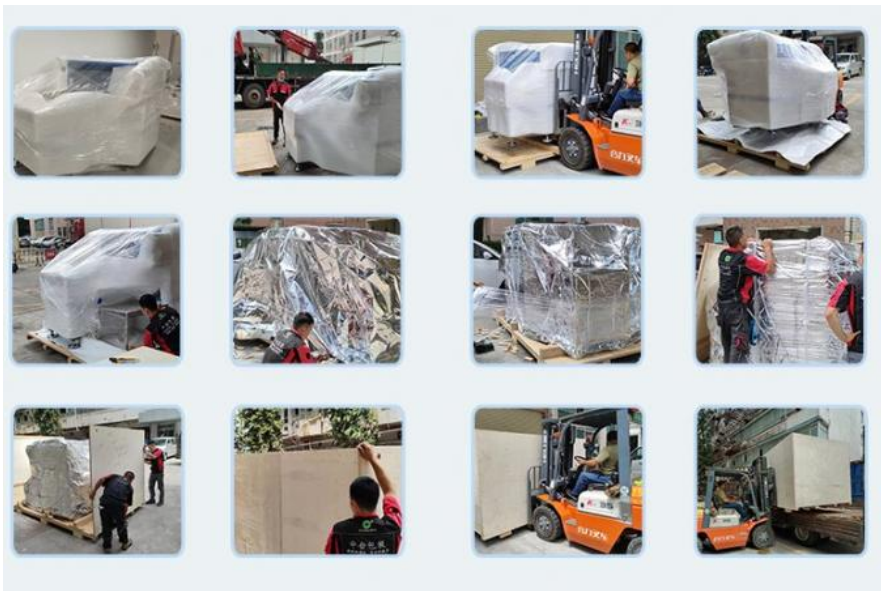
- (1)Shenzhen ETON automation equipment CO.,Ltd. was founded in 2011 and Jiangxi Intelligent industrial Park was used in 2020. So far, ETON has more than 11 years experience.
- (2)ETON is the leading manufacturer of global photoelectric high speed pick and place machine and enjoys a good reputation around the world.
- (3)The produces have exported more than 30 countries and regions, including Egypt, India,Turkey, Russia, Brazil, South Africa and so on.
- (4)ETON has five level management policy:sincere business, focus on R&D, manufacturing intentions, considerate service, customer trust.
- (5)ETON also keep "no worries" after-sales service, and the products are supported to personal customization, specialist sale always track the production and transportation of equipment.

#### Packaging

Filming packing:Make the machine sanitary, clean, sealed packaging, dust and humidity; have good shock resistance, impact resistance, and good protection performance with tightness and fixity.

vacuum packing:Advantages of moisture proof,dust proof and so on.

wooden packing: It has good cushioning performance, corrosion resistance, high strength and hygroscopicity, moisture-proof and earthquake-resistant functions.



## Service



## Service

- ※ Maintenance period 1 year  
One year warranty, during warranty, any parts need to be repaired and replaced will be free.
- ※ Software and hardware lifetime maintenance  
Free upgrade software, software is Reach and develop by ETON, so we support whole lifetime free upgrade updates.
- ※ Visit customers regularly and gather information  
Visit clients regularly. We attend different exhibition in different cities every year, at the same time, we will visit local clients and support our service and collect and feedback customer suggestions in time.
- ※ Provide latest information about technology and equipment  
We give professional technology suggestion with our clients. And share the updates news to our clients

## FAQ

### Can you provide a whole line solution?

Yes , we can. We can supply SMT line and some LED production lines.

### Can we customize the machine?

Of course, all of our machine can be customize.

### Q: What kind of machine will provide besides pick and place machine ?

A: ETON as the largest manufacturer of SMT machine in China, we provide whole SMT line, such as reflow oven, printer, conveyor, pick and place machine, Loader, Unloader, etc.

### How long the delivery?

About 30 days.

### Contact David

Whatsapp/Wechat/Tel: **+86 13827425982**

E-mail: **david@eton-mounter.com**



**Shenzhen Eton Automation Equipment Co., Ltd.**



0086 13670197725 (Whatsapp/Wechat)



[linda@eton-mounter.com](mailto:linda@eton-mounter.com)



[smtmountingmachine.com](http://smtmountingmachine.com)

HENGFENG INDUSTRIAL AREA,ZHOUSHI ROAD NO. 739,HEZHOU COMMUNITY,HANGCHENG  
STREET,BAOAN,SHENZHEN,CHINA