



Shenzhen Eton Automation Equipment Co., Ltd.
smtmountingmachine.com

HT-E8D-1200 Dual Modules SMT Mounting Machine For LED DOB Production Line

Our Product Introduction

for more products please visit us on smtmountingmachine.com

Basic Information

- Place of Origin: CHINA
- Brand Name: ETON
- Certification: CE, CCC, SIRA
- Model Number: HT-E8D-1200
- Minimum Order Quantity: 1 set
- Packaging Details: vacuum adsorption, wooden packing
- Delivery Time: 30 days after receive the down-payment
- Payment Terms: T/T
- Supply Ability: 50 sets per month



Product Specification

- Warranty: 1 Year
- Applicable Components: 0402
- Name: SMT Pick And Place Machine
- Condition: New, 100% Original, Brand-new
- Product Name: Place Machine\ LED Mounter\ LED Assembly Machine
- Mounting Speed: 90000 CPH
- Usage: Circuit Board Assembly, SMT Mounting Machine, SMD, LED
- Feeders: 48
- Tape Width: 24mm, 8mm, 12mm
- Highlight: **Dual Modules SMT Mounting Machine, SMT Mounting Machine for LED DOB, LED DOB Making Machine Production Line**



More Images



Product Description

ETON SMT placemant machine With 90000CPH for led DOB making chip mounter

Production Introduction of Pick And Place Machine HT-E8D-1200

HT-E8D-1200 dual module multifunctional pick and place machine can produce two different products at same time taking the mounting mode of group picking and separately placing, separately picking and separately placing. It's feeding way is electric feeder with double motor with 24 PCS of head and 48 PCS of feeders station capacity can reaches 90000 CPH.

HT-E8D of Technical Parameter

Dimension	3150*2250*1650mm
PCB Size	Max: 1200*300mm Min: 100*100mm
PCB Thickness	0.5~5mm
Mounting mode	Group picking and separately placing,separately picking and separately placing
Mounting precision	±0.04mm
Mounting height	<15mm (Automatic changing)
Mounting speed	90000 CPH
No.of camera	4 sets Vision for the flight identification, Mark correction
Components space	0.2mm
No.of feeders station	48 PCS
No.of head	24 PCS

Production Line

we provide whole SMT line, such as reflow oven, printer, conveyor, pick and place machine, Loader, Unloader, glue dispenser, etc.



Company profile

ETON Automation Equipment Co., Ltd is a professional manufacturer focusing in pick and place machine. Right now, we have integrated R&D, production and sales together.

Quality assurance

ETON has more than 10 years of R & D experience in the SMT industry. It has its own R & D team. It has a very strict quality control department in the R & D process from product selection to machine manufacturing. It is very reliable for the quality of our machines. Our machine components are all top brands, such as Hikvision cameras, and German igus drag chains.

Packaging

All machines are packed with vacuum and wooden packing like the one in the pictures.

Step 1. Film packaging

Prevent the machine from dust ,water,crash and shaking.

Step 2. Add foam+film packaging

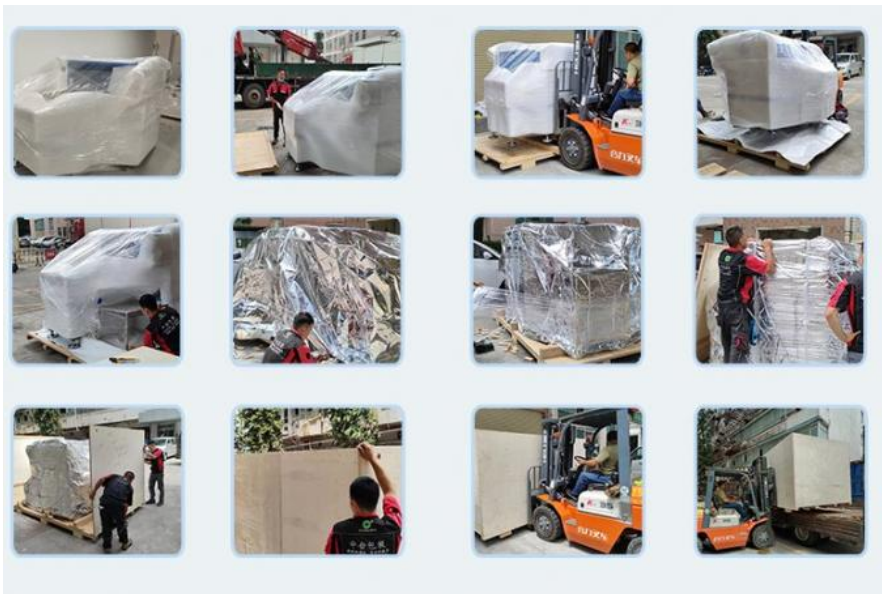
Double safe protection,Prevent the machine from crash and shaking.

Step 3. Unique tin foil packaging

Add tin foil packing can prevent the film from scratch broken.

Step 4. customized Strong wood carton packing

The customized strong wood packing for ocean ship,The machines are fix oi in the wood carton, effectively prevent collision and shock.



Service



Service

1. Maintenance period: 1 year
2. Provide free online training and remote guidance
3. Oversea and local engineer and office provide free installation and training door-to-door
4. Software is R&D independently by ETON, provide free upgrade whole lifetime
5. Make regular return visits to collect customer information and provide customers with the latest production technology and equipment information regularly

Market share

In China, ETON helps 80% of people build factories, such as Ople, MLS, NVC, etc. Of course, we have hundreds of machines sold abroad every year, such as India, Egypt, Turkey, Pakistan, Algeria, Iran, Vietnam, etc. Surya, Calcom, Polycab, Rangdong, RK, etc. are all our customers.

FAQ

Q: How is the training?

A: After purchasing our products, you can send your engineers to study in our factory, or we can send our engineers to your factory to train your staff for you.

Q: Do you have a product certification certificate?

A: Our products have CCC, CE, SRIA certification.

Q: How about the after-sale service? How about the warranty?

A: We have a team of professional engineers to solve your problems. Any parts that require repair and replacement are free of charge during the warranty period. We can also provide you with training and on-site installation, and support remote control of the machine. The machine uses Chinese and English interface, very easy to operate.

Contact David

Whatsapp/Wechat/Tel: **+86 13827425982**

E-mail: **david@eton-mounter.com**



Shenzhen Eton Automation Equipment Co., Ltd.



0086 13670197725 (Whatsapp/Wechat)



linda@eton-mounter.com



smtmountingmachine.com

HENGFENG INDUSTRIAL AREA,ZHOUSHI ROAD NO. 739,HEZHOU COMMUNITY,HANGCHENG
STREET,BAOAN,SHENZHEN,CHINA