



Shenzhen Eton Automation Equipment Co., Ltd.  
smtmountingmachine.com

## ETON SMT Mounting LED DOB Making Machine Electronic Placement Machine

### Our Product Introduction

for more products please visit us on [smtmountingmachine.com](http://smtmountingmachine.com)

#### Basic Information

- Place of Origin: CHINA
- Brand Name: ETON
- Certification: CE, CCC, SIRA
- Model Number: HT-E8D-1200
- Minimum Order Quantity: 1 set
- Packaging Details: vacuum adsorption, wooden packing
- Delivery Time: 30 days after receive the down-payment
- Payment Terms: T/T
- Supply Ability: 50 sets per month



#### Product Specification

- Warranty: 1 Year
- Applicable Components: 0402
- Name: SMT Pick And Place Machine
- Condition: New, 100% Original, Brand-new
- Product Name: Place Machine\ LED Mounter\ LED Assembly Machine
- Mounting Speed: 90000 CPH
- Usage: Circuit Board Assembly, SMT Mounting Machine, SMD, LED
- Feeders: 48
- Tape Width: 24mm, 8mm, 12mm
- Highlight: SMT Mounting LED DOB Making Machine, LED DOB Making Machine, LED DOB Electronic Placement Machine



#### More Images



## Product Description

### ETON SMT placemant machine With 90000CPH for led DOB making chip mounter

#### Production Introduction of Pick And Place Machine HT-E8D-1200

HT-E8D-1200 dual module multifunctional pick and place machine can produce two different products at same time taking the mounting mode of group picking and separately placing, separately picking and separately placing. It's feeding way is electric feeder with double motor with 24 PCS of head and 48 PCS of feeders station capacity can reaches 90000 CPH.

#### HT-E8D of Technical Parameter

Dimension	3150*2250*1650mm
PCB Size	Max: 1200*300mm Min: 100*100mm
PCB Thickness	0.5~5mm
Mounting mode	Group picking and separately placing,separately picking and separately placing
Mounting precision	±0.04mm
Mounting height	<15mm (Automatic changing)
Mounting speed	90000 CPH
No.of camera	4 sets Vision for the flight identification, Mark correction
Components space	0.2mm
No.of feeders station	48 PCS
No.of head	24 PCS

#### Production Line

we provide whole SMT line, such as reflow oven, printer, conveyor, pick and place machine, Loader, Unloader, glue dispenser, etc.



#### Company profile

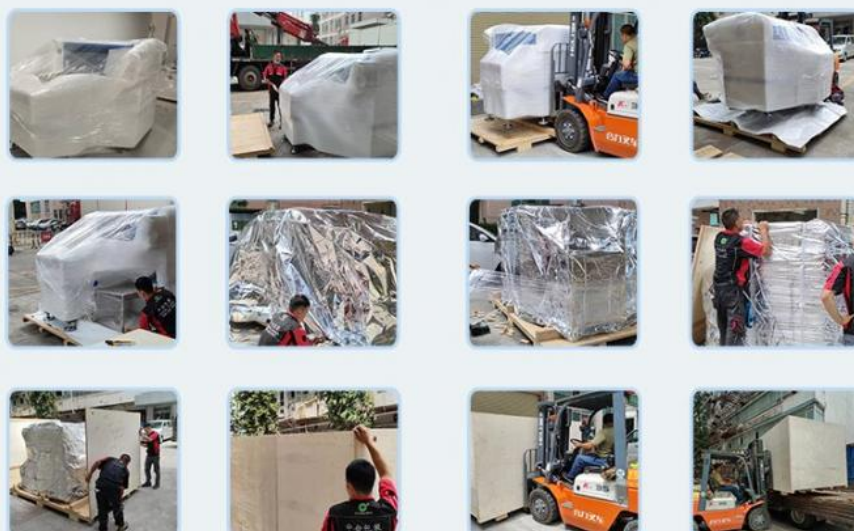
**ETON Automation Equipment Co., Ltd** is a professional manufacturer focusing in pick and place machine. Right now, we have integrated R&D, production and sales together.

#### Quality assurance

ETON has more than 10 years of R & D experience in the SMT industry. It has its own R & D team. It has a very strict quality control department in the R & D process from product selection to machine manufacturing. It is very reliable for the quality of our machines. Our machine components are all top brands, such as Hikvision cameras, and German igus drag chains.

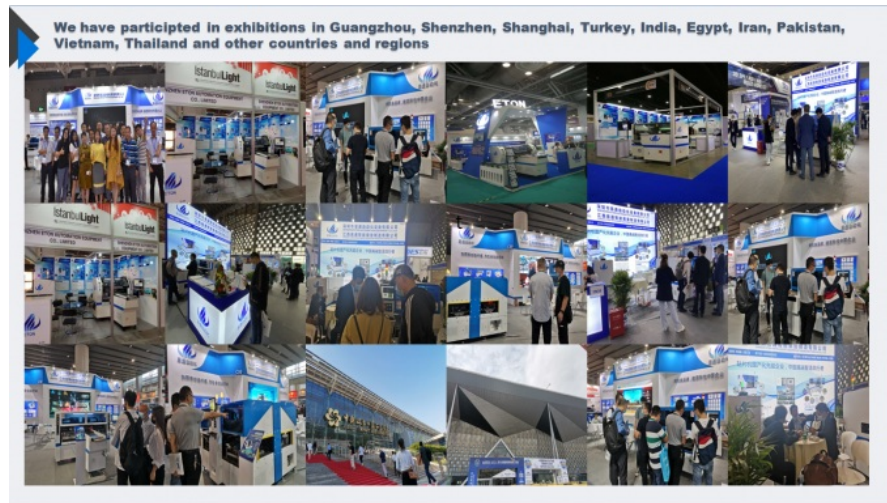
#### Packaging

Keep a good quality of the machine when during transportation till the destination of our clients which is an imperative aspect for one of a suitable service for our clients to buy our machine, so making sure of a qualified and sturdy packing is a key mission for us, here are the specified steps for your reference:



### Exhibition

ETON has participated in many exhibitions of foreign countries , such as India Mumbai Exhibition, India Delhi Exhibition, Egypt Exhibition, Turkey Exhibition, Pakistan Exhibition, etc and trading with more than 20 countries. Furthermore, we have took part in our domestic large exhibition, like Guangzhou Guangya Exhibition, Shanghai Munich Exhibition, Chongqing LED light Exhibition, etc.



### Market share

In China, ETON helps 80% of people build factories, such as ople, MLS, NVC, etc. of course, we have hundreds of machines sold abroad every year, such as India, Egypt, Turkey, Pakistan, Algeria, Iran, Vietnam, etc. Surya, calcom, polycab, rangdong, rk, etc. are all our customers.

### FAQ

#### Q:Is your machine difficult to operate?

A:You can rest assured that our machine operation is very simple. Our software supports Chinese and English. We will have engineers to teach you by hand. We will not leave until you can operate independently. We also support online video teaching.

#### Q:What strength do you have?

A:We have obtained 112 utility patents, 9 invention patents and 12 software copyrights.

#### Q:Do you have any customers abroad?

A:Yes, we have many customers abroad, such as rangdong, rk, Surya, calcom, polycab, etc.

### Contact David

Whatsapp/Wechat/Tel: **+86 13827425982**

E-mail: **david@eton-mounter.com**



**Shenzhen Eton Automation Equipment Co., Ltd.**



0086 13670197725 (Whatsapp/Wechat)



[linda@eton-mounter.com](mailto:linda@eton-mounter.com)



[smtmountingmachine.com](http://smtmountingmachine.com)

HENGFENG INDUSTRIAL AREA,ZHOUSHI ROAD NO. 739,HEZHOU COMMUNITY,HANGCHENG STREET,BAOAN,SHENZHEN,CHINA