



ETON SMD Mounting Machine HT-F7S LED Tube SMT Chip Mounter

Our Product Introduction

for more products please visit us on smtmountingmachine.com

Basic Information

- Place of Origin: CHINA
- Brand Name: ETON
- Certification: CE, CCC, SIRA
- Model Number: HT-F7S
- Minimum Order Quantity: 1 set
- Packaging Details: vacuum adsorption, wooden packing
- Delivery Time: 30 days after receive the down-payment
- Payment Terms: T/T
- Supply Ability: 50 sets per month



Product Specification

- Warranty: 1 Year
- Applicable Components: 0805,0603,1206
- Name: SMT Pick And Place Machine
- Application: SMT Production Line
- Condition: New,100% Original,Brand-new
- Product Name: Place Machine\ LED Mounter\LED Assembly Machine
- Mounting Speed: 180000 CPH
- Type: Automatic
- Usage: SMT Mounting Machine,LED
- Feeders: 68
- Highlight: **Chip Mounter SMD Mounting Machine, SMD Mounting Machine For LED Tube, LED Tube SMT Chip Mounter**



More Images



Product Description

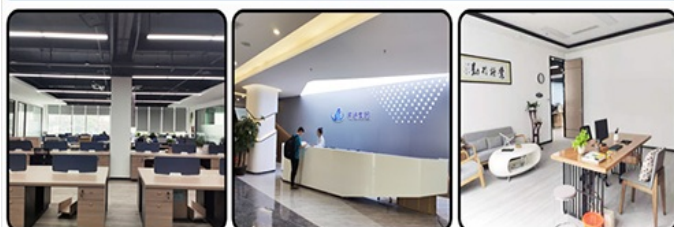
SMT mounter 180000CPH for tube/strip

Machine main parameter

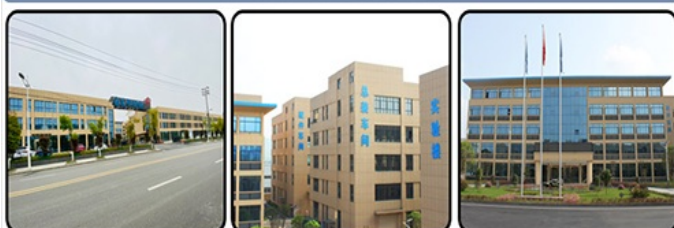
Length	2700mm
Width	2300mm
Height	1550mm
Total weight	1700kg
PCB size	Max:1200*330mm Min:100*100mm
PCB thickness	0.5-5mm
Mounting height	≤5mm
Mounting speed	180000CPH
No.of head	34PCS
Mounting precision	±0.02mm

Company profile

SHENZHEN Office



ETON Industrial Park



50,000 square meters

7 buildings

300 employees



assembly line

CNC workshop

Production line Exhibition hall

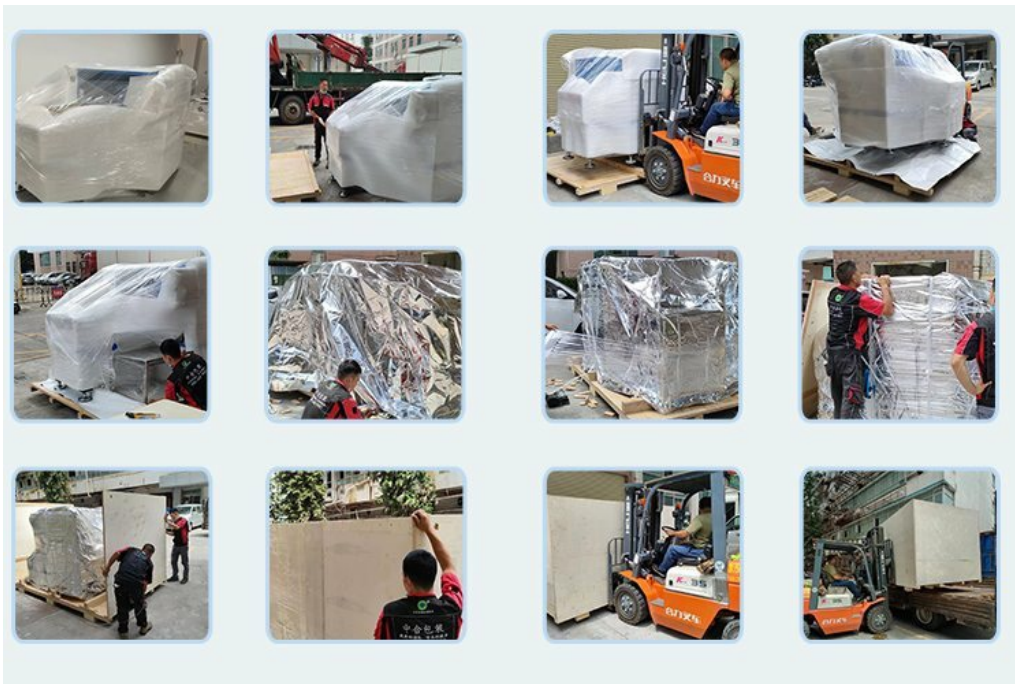
Shenzhen ETON Automation Equipment Co., Ltd., founded in 2011, is a provider focusing on the R & D, production and sales of SMT high-speed mounter and SMT peripheral automation equipment, as well as the manufacturing and process scheme of garment production.

Service

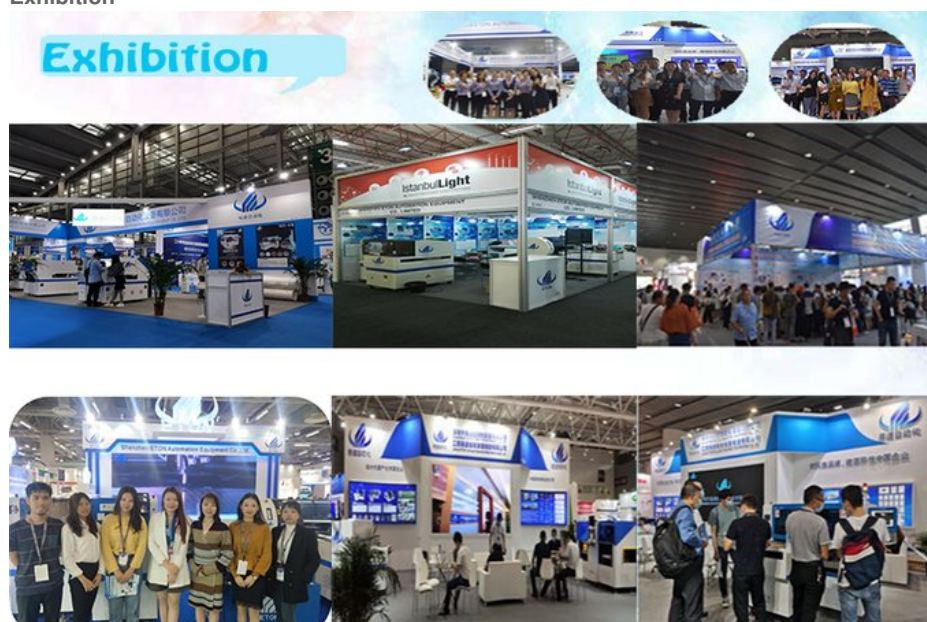
We can provide you with excellent service, we also have professional overseas engineers to your factory provide install, training service until you can operate the machine adroitly.

- 1.We can provide you with the whole production line.
- 2.Our software is R&D independently.We can offer software upgrade for lifetime for free
- 3.We have 50,000 square meters of industrial park. The production strength is abundant, occupies the first place in the domestic profession.
- 4.If you have any problem with the product, we will have overseas engineers come to your home for free repair or replacement within one year. Because we have offices overseas and local engineers.

Transport



Exhibition



Our company participates in many exhibitions at home and abroad every year, We have came to different countries every year to participate in the exhibition, so that customers can further understand the company and products, expand the company's influence.

FAQ

1. How many machines sell in India ?

A: So far, we have hundreds machine sell in India.

2. I don't know how to operate machine and will it required experience?

A: Our machine is very easy for operate, usually several days for training is enough and not required experience. ETON engineer will teach online now and will visit your factory after corona.

3. I want to produce led bulb, do you have machine for that?

A: Yes, we could provide the whole SMT Machine for led bulb.

4. I want to produce 100 meters led strip light roll to roll, is F7S suitable ?

A: F7S suitable for one meter and half meter strip light, not suitable for 100 meters. But we have two modules suitable for Roll to roll strip light, if you want to know more details about these two modules, please contact me as soon as possible.

what is a lens?

It can make the light emitted by the point light source converge or diverge, and play the role of changing the beam angle, so as to achieve the purpose of changing the illumination area and degree value of the illuminated surface. The light shape of the lens is the most standard, and there are obvious secant lines of light and dark, which solves the problem of astigmatism

through the action of concentrating light.

Contact me

David whatsapp/wechat/Tel: **+86 13827425982**

E-mail: **david@eton-mounter.com**



Shenzhen Eton Automation Equipment Co., Ltd.



0086 13670197725 (Whatsapp/Wechat)



linda@eton-mounter.com



smtmountingmachine.com

HENGFENG INDUSTRIAL AREA,ZHOUSHI ROAD NO. 739,HEZHOU COMMUNITY,HANGCHENG
STREET,BAOAN,SHENZHEN,CHINA