



500000CPH automatic pick and place machine for 100m LED roll to roll Production

Our Product Introduction

for more products please visit us on smtmountingmachine.com

Basic Information

- Place of Origin: CHINA
- Brand Name: ETON
- Certification: CE, CCC, SIRA
- Model Number: T9-2S
- Minimum Order Quantity: 1 set
- Packaging Details: vacuum adsorption, wooden packing
- Delivery Time: 30 days after receive the down-payment
- Payment Terms: T/T
- Supply Ability: 50 sets per month

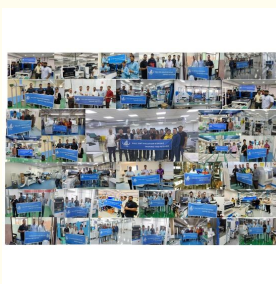


Product Specification

- Warranty: 1 Year
- Applicable Components: 0805,0603,1206
- Name: SMT Pick And Place Machine,SMT Chip Mounter
- Application: SMT Production Line
- Condition: New,100% Original,Brand-new
- Mounting Speed: 500000 CPH
- Type: Automatic
- Usage: SMT Mounting Machine,LED
- Highlight: **500000CPH automatic pick place machine, 100m LED pick place machine, LED roll pick and place machine**



More Images



Product Description

100m Led strip mounter 136 nozzles with 500K

Features

High Accuracy Magnetic Linear Motor + Panasonic Servo Motor
 136 heads 136 feeder stations Four Arm four module ,34 nozzles for each mounting part.
 Part A or part B can be mounted separately or synchronously.
 Vision alignment, Mark correction
 Calibration automatically, high precision, available for RGB
 Capacity can Reach 500000 CPH

Parameter

Dimension (L*W*H)	3454*3035*1777 mm
Total weight	3100kg
PCB Length width	250mm*any length
PCB thickness	0.1-0.5mm
PCB clamping	Vacuum adsorption, cylinder splint, adjustable track width
No.of feeders station	136 PCS
No.of head	136 PCS
Mounting speed	500000 CPH
Components	LED3014/3020/3528/5050,Capacitance, resistance, bridge stack, etc
Operating environment	9.6 KW

LED Flexible Strip Production Process

Step 1	Loader Machine	Sending the FPCB roll to printer machine
Step 2	Semi-automatic Stencil Printer	Printing the solder paste on the flexible PCB
Step 3	Buffer Stage	Buffer and transport the flexible PCB to pick and place machine
Step 4	Pick and Place Machine	Mounting LED chips and components on flexible PCB
Step 5	Transportation Belt Line	Transport the flexible PCB to reflow oven
Step 6	Reflow Oven	Heating the solder paste with FPCB to welding the components on FPCB
Step 7	Unloader Machine	Rewinding the finished Flexible strip

Packaing

All machines are packed with vacuum and wooden packing like the one in the pictures.

Step 1. Film packaging

Prevent the machine from dust ,water,crash and shaking.

Step 2. Add foam+film packaging

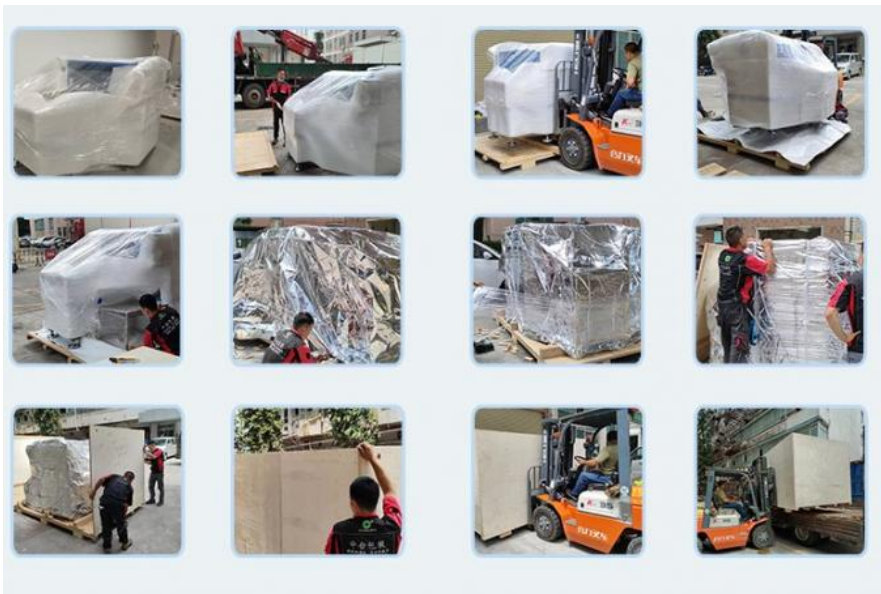
Double safe protection,Prevent the machine from crash and shaking.

Step 3. Unique tin foil packaging

Add tin foil packing can prevent the film from scratch broken.

Step 4. customized Strong wood carton packing

The customized strong wood packing for ocean ship,The machines are fix oi in the wood carton, effectively prevent collision and shock.



Customer's factory

1. LED bulb factory
 2. LED display factory
 3. LED Tube factory
 4. LED Strip light factory
- etc.....



SMT detection

In LED lights making machine production, in addition to manual visual inspection, defects in the production process can also be detected by machines, such as AOI optical inspection.

The machine automatically scans the PCB through a camera, captures images, and compares the tested solder joints with qualified parameters in the database. And after image processing, inspect the defects on the PCB and display/mark the defects through the display, or automatically mark them out for repair. It adopts high-speed, high-precision vision processing technology to automatically detect various installation errors and soldering defects on the PCB board. PCB boards range from fine-pitch high-density boards to low-density large boards, providing in-line inspection solutions to improve production efficiency and soldering quality.

Automated Optical Inspection (AOI) will reduce defects and find and eliminate errors early in the assembly process for good process control. Early detection of defects will avoid sending bad PCBs to subsequent assembly stages, and will reduce repair costs and avoid scrapping non-repairable boards.

FAQ

Q1: Do you provide software updates?

For customers who buy our machine, we can offer free upgraded software for you.

Q2: Does our machine need air supply?

Yes, machine needs air supply.

Q3: This is the first time I use this kind of machine, is it easy to operate? We have English user manual and guide video to teach you how to use the machine. And also we'll arrange our overseas engineers to your factory for free installation and training.

Q4: How about the warranty? Provide one year warranty period. Outside the warranty period, we will have 1-2 free door-to-door services every year.

Q5:How can I buy machine from you?

(1)Consult us on line or by e-mail;

(2)Negotiate and confirm the final price, shipping, payment method and other terms; (3)Send you the proforma invoice and confirm your order;

(4)Make the payment according to the method put on proforma invoice;

(5)We prepare your order in terms of the proforma invoice after confirming your full payment . And 100% quality check before shipping; (6)Send your order via express or by air or by sea.

Contact me

David whatsapp/wechat/Tel: +86 13827425982

E-mail: david@eton-mounter.com



Shenzhen Eton Automation Equipment Co., Ltd.



0086 13670197725 (Whatsapp/Wechat)



linda@eton-mounter.com



smtmountingmachine.com

HENGFENG INDUSTRIAL AREA,ZHOUSHI ROAD NO. 739,HEZHOU COMMUNITY,HANGCHENG
STREET,BAOAN,SHENZHEN,CHINA