



0603 Components Automatic PCB Mounting Machine T9-2S 500000 CPH for Roll to Roll LED Strip

Our Product Introduction

for more products please visit us on smtmountingmachine.com

Basic Information

- Place of Origin: CHINA
- Brand Name: ETON
- Certification: CE, CCC, SIRA
- Model Number: T9-2S
- Minimum Order Quantity: 1 set
- Packaging Details: vacuum adsorption, wooden packing
- Delivery Time: 30 days after receive the down-payment
- Payment Terms: T/T
- Supply Ability: 50 sets per month



Product Specification

- Warranty: 1 Year
- Applicable Components: 0805,0603,1206
- Name: SMT Pick And Place Machine,SMT Chip Mounter
- Application: SMT Production Line
- Condition: New,100% Original,Brand-new
- Mounting Speed: 500000 CPH
- Type: Automatic
- Usage: SMT Mounting Machine,LED
- Highlight: **Roll LED PCB Mounting Machine, Automatic PCB Mounting Machine, 0603 Components PCB Mounting Machine**



More Images



Product Description

Automatic pcb mounting machine T9-2S for LED Strip roll to roll 500000 CPH

Parameter

PCB size(Width*Length)	250(± 10)mm*Any length
PCB thickness	0.1 -0.5mm
PCB clamping	Vacuum adsorption, cylinder clamping, track width adjustable
Mounting way	Group picking and group placing
Mounting mode	Double rail + Four groups of placement heads
No. of camera	10 sets
Repeat precision	±0.05mm/Mounting speed
Mounting speed	Double side:500000CPH,single side:250000CPH(Optimum speed)

ETON Profile

ETON mission: professionalism, excellent technology, sharing results.

ETON goal: to create a national brand and build an international Chinese enterprise.

ETON purpose: to create value for customers and create benefits for the society.

ETON vision: determined to become the world's most competitive manufacturer and service provider of pick and place machine and high-end electronic testing equipment.

Certificates

As an experienced manufacturer in SMT machine, we obtained a number of intellectual property technologies, including 9 invention patents, 112 practical patents, 12 software copyrights, with our won R&D department for production and inspection. And also earned the oversea certificates as CE, CCC, SIRA, etc.



Packaing

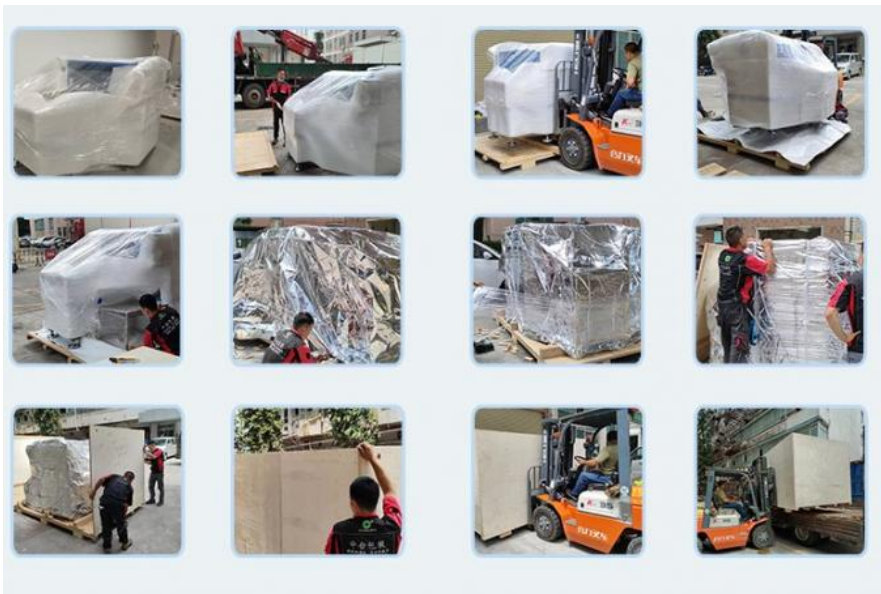
All machines are packed with vacuum and wooden packing

Step1:Film packaging.

Step2:Vacuum packaging.

Step3:Wooden box packaging

You can trust us, because we have professional and standard packaging to protect the machine.



Our Exhibitions

Eton has participated in many exhibitions of foreign countries , such as India Mumbai Exhibition, India Delhi Exhibition, Egypt Exhibition, Turkey Exhibition, Pakistan Exhibition, etc and trading with more than 20 countries. Furthermore, we have took part in our domestic large exhibition, like Guangzhou Guangya Exhibition, Shanghai Munich Exhibition, Chongqing LED light Exhibition, etc.



Customer's factory

1. LED bulb factory
 2. LED display factory
 3. LED Tube factory
 4. LED Strip light factory
- etc.....



FAQ

Q: Are you a trade company or a manufacturer?

A: We are an experienced manufacturer of SMT. Our company has been established for ten years, the company has more than 300 employees, the company is a large-scale, is the top domestic enterprises

Q: What's your operating system?

A: Our operating system is windows 7.

Q: If I have any questions that I don't understand, can I ask you at any time?

A: Yes. If you have any questions, please don't hesitate to ask me. We have local engineers and office in India and Egypt, can help u very convenient.

Contact me

David whatsapp/wechat/Tel: [+86 13827425982](tel:+8613827425982)

E-mail: david@eton-mounter.com



Shenzhen Eton Automation Equipment Co., Ltd.



0086 13670197725 (Whatsapp/Wechat)



linda@eton-mounter.com



smtmountingmachine.com

HENGFENG INDUSTRIAL AREA,ZHOUSHI ROAD NO. 739,HEZHOU COMMUNITY,HANGCHENG STREET,BAOAN,SHENZHEN,CHINA