



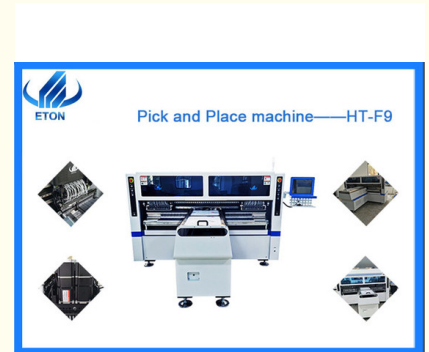
ETON Fastest Pick And Place Machine For LED Strip Production Chip Mounting

Our Product Introduction

for more products please visit us on smtmountingmachine.com

Basic Information

- Place of Origin: CHINA
- Brand Name: ETON
- Certification: CE, CCC, SIRA
- Model Number: T9-2S
- Minimum Order Quantity: 1 set
- Packaging Details: vacuum adsorption, wooden packing
- Delivery Time: 30 days after receive the down-payment
- Payment Terms: T/T
- Supply Ability: 50 sets per month

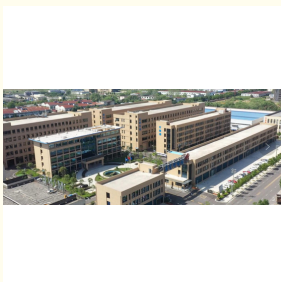


Product Specification

- Warranty: 1 Year
- Applicable Components: 0805,0603,1206
- Name: SMT Pick And Place Machine,SMT Chip Mounter
- Application: SMT Production Line
- Condition: New,100% Original,Brand-new
- Mounting Speed: 500000 CPH
- Type: Automatic
- Usage: SMT Mounting Machine,LED
- Highlight: **LED Strip Fastest Pick And Place Machine, LED Strip Chip Mounting Machine, Pick And Place Chip Mounting Machine**



More Images



Product Description

100m Led strip mounter 136 nozzles with 500K

Parameter

Dimension (L*W*H)	3454*3035*1777 mm
Total weight	3100kg
PCB Length width	250mm*any length
PCB thickness	0.1-0.5mm
PCB clamping	Vacuum adsorption, cylinder splint, adjustable track width
No.of feeders station	136 PCS
No.of head	136 PCS
Mounting speed	500000 CPH
Components	LED3014/3020/3528/5050,Capacitance, resistance, bridge stack, etc
Operating environment	9.6 KW

LED Flexible Strip Production Process

Step 1	Loader Machine	Sending the FPCB roll to printer machine
Step 2	Semi-automatic Stencil Printer	Printing the solder paste on the flexible PCB
Step 3	Buffer Stage	Buffer and transport the flexible PCB to pick and place machine
Step 4	Pick and Place Machine	Mounting LED chips and components on flexible PCB
Step 5	Transportation Belt Line	Transport the flexible PCB to reflow oven
Step 6	Reflow Oven	Heating the solder paste with FPCB to welding the components on FPCB
Step 7	Unloader Machine	Rewinding the finished Flexible strip

SMT Applications industry

Household appliances industry, Auto electronics industry, Power industry, LED industry, security,instruments and meters industry, communications industry, intelligent control industry, Internet of Things(IOT) industry and military industry, etc.

Company profile

Company five level management policy: sincere business, focus on R&D, manufacturing intentions, considerate service, customer trust.

"No worries"after sale service concept: the Pearl River Delta region to arrive within 4 hours, day to solve; Guangdong Province 24 hours.

Eton mission: professional, excellent technology, sharing the results.

Eton goal: to create a national brand, build international Chinese enterprise.

Eton purpose: to create value for customers, creating benefits for society.



Packages

Our package step is follow the blowing:

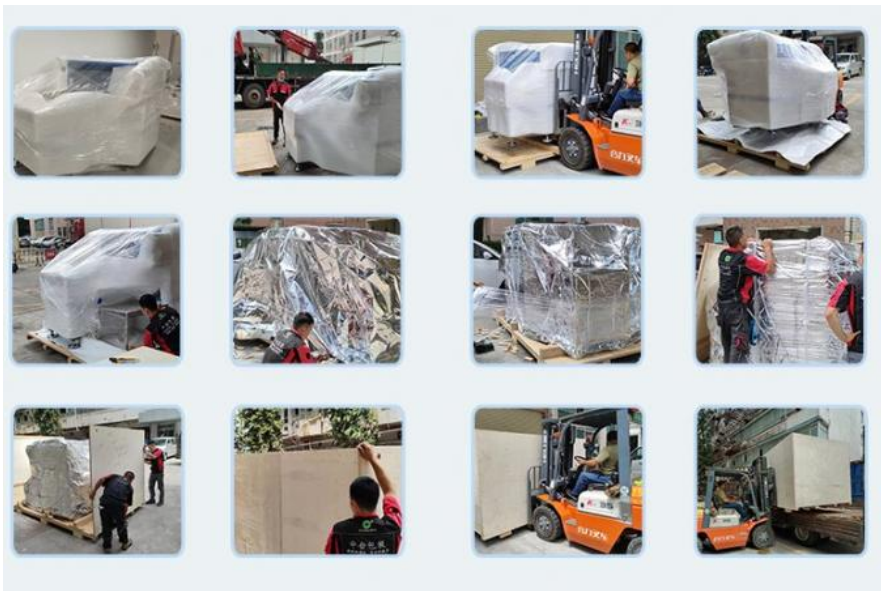
STEP 1: Film packaging to prevent the dust and water;

STEP 2: Packing in a foam cotton stretch a film to protect the outside of the machine;

STEP 3: Vacuum paper package and moisture proof bag, to keep dry during the transportation;

STEP 4: Equip with sturdy wooden boxes to ensure the safety of the machine, then transportation by trucks to the specified port.

Delivery: by sea, air, land transport.



Client workshop

We have many big clients in India, Turkey and many countries.

In India: SURYA, POLYCAB, FIEM, RK, GK, TECHNO LED, CALCOM, CENTURY LED, AUTOPAL, SKYQUAD, NTL, KONARK, CEPL, FLARE, SLS are one of our large customers.

In Turkey: ACK, KENDAL, KING LED are one of our large customers.

In Vietnam: RangDong, TAMKIM are one of our large customers.

In Egypt: UNISTAR is one of our large customers.

In Tunis: SKY INDUSTRIES, FAWANIS are one of our large customers



Service

High service efficiency, there is service office in India. Besides India, we also have local engineers in Egypt, Turkey. Can provide you with timely services.

Chinese engineers provide online services. If necessary, Chinese engineers will come to your factory for free install and training.

Quality First, Client-oriented, Continuous Improvement.

FAQ

Q: What's your delivery time?

A: Usually 30 days after deposit, if we have inventory, the time can be brought forward.

Q: It's hard to use the machine?

A: No, not at all. For our previous clients, at most 5 days is enough to learn to operate the machines.

Q: How about the after-sale service? How about the warranty?

A: We have a team of professional engineers to solve your problems. Any parts that require repair and replacement are free of charge during the warranty period. We can also provide you with training and on-site installation, and support remote control of the machine, the machine uses Chinese and English interface, very easy to operate.

Contact me

David whatsapp/wechat/Tel: +86 13827425982

E-mail: david@eton-mounter.com



Shenzhen Eton Automation Equipment Co., Ltd.



0086 13670197725 (Whatsapp/Wechat)



linda@eton-mounter.com



smtmountingmachine.com

HENGFENG INDUSTRIAL AREA,ZHOUSHI ROAD NO. 739,HEZHOU COMMUNITY,HANGCHENG
STREET,BAOAN,SHENZHEN,CHINA