



Dual Module SMT Mounting Machine 90000 CPH Surface Mount Placement Machine

Our Product Introduction

for more products please visit us on smtmountingmachine.com

Basic Information

- Place of Origin: CHINA
- Brand Name: ETON
- Certification: CCC, CE, SIRA
- Model Number: HT-E8D-1200
- Minimum Order Quantity: 1 SET
- Packaging Details: wooden case,
- Delivery Time: 10 working days
- Payment Terms: T/T
- Supply Ability: 50 set per month



Product Specification

- Warranty: 1 Year
- Applicable Components: 0402
- Name: SMT Pick And Place Machine
- Application: SMD Production Line, SMT Production Line
- Condition: New, 100% Original, Brand-new
- Mounting Speed: 90000 CPH
- Type: Automatic
- Usage: Circuit Board Assembly, SMT Mounting Machine, SMD, LED
- Feeders: 48
- Highlight: surface mount placement machine, 90000 CPH SMT Mounting Machine, Dual Module SMT Mounting Machine



More Images



Product Description

Product discription

HT-E8D-1200 is double module pick and place machine.Each module is controlled by a set of independent programs.And ic can produce 2 difference products while it works with 90000 CPH.

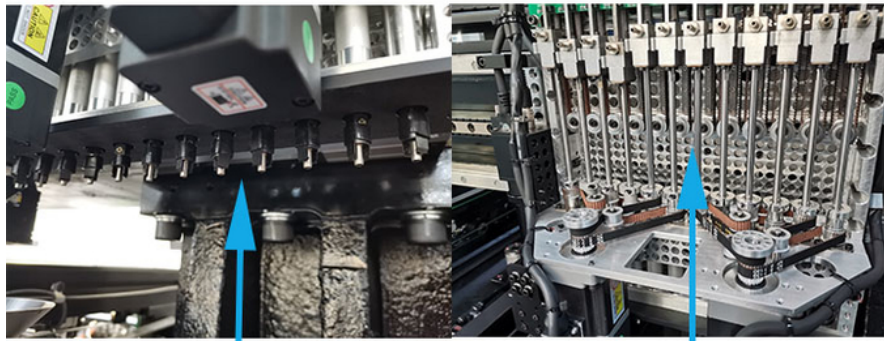




Dimension	3150*2250*1650mm
Weight	2500kg
PCB length width	1200*300mm 100*100mm
PCB thickness	0.5~5mm
NO. of head	24PCS
Mounting mode	group picking and separately placing, separately picking and separately placing
NO.of camera	4 PCS
Mounting precision	±0.04mm
Mounting speed	90000CPH
NO.of feeders station	48PCS

E8D is a high-speed multifunctional Mounter with improved speed.
 With the increase of modules, the production capacity is twice that of E8S.
 The optimal capacity is 90000CPH

Machine details

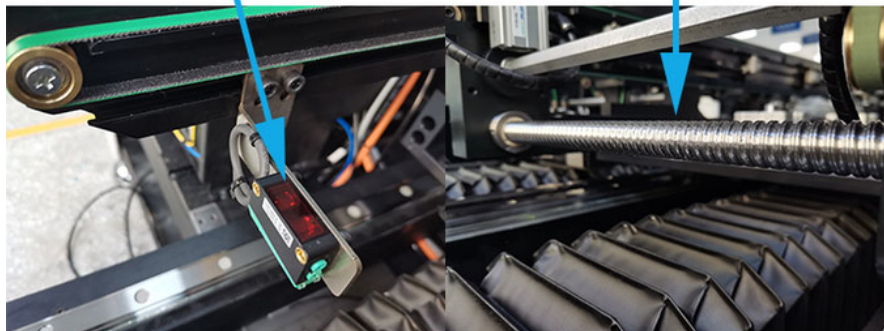


Patch head

Suction nozzle rod

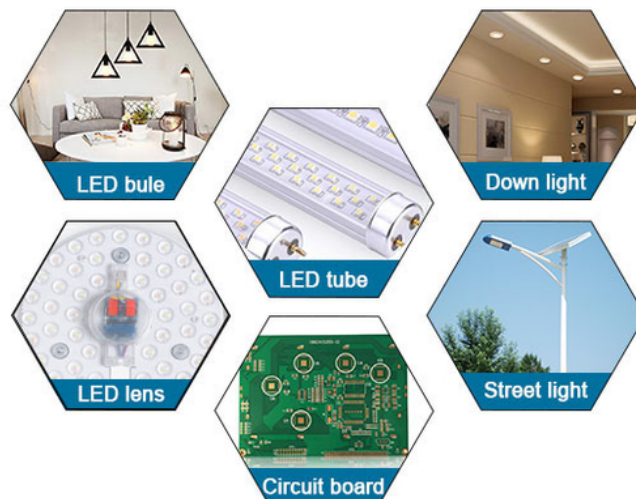
sensor

Screw rod



One machine for multiple purposes

Precision manufacturing+quality assurance



(1)**Suitable machines:** various machines are apply for various products, **DOB, LED bulbs, lens, streetlight, ceiling light, spotlight, flexible strip, electric board, power driver, household application, display min component 0201**, highest capacity reach **500000CPH**;

(2)**Complete service:** local engineers and office provide **freely training and installation, software freely upgrade whole lifetime**;

(3)**Market and export:** Help 90% of domestic LED factories to build production lines; Foreign exports to more than 30 countries and regions, such as Turkey, India, Egypt, Brazil, Russia, Pakistan, South Korea, etc

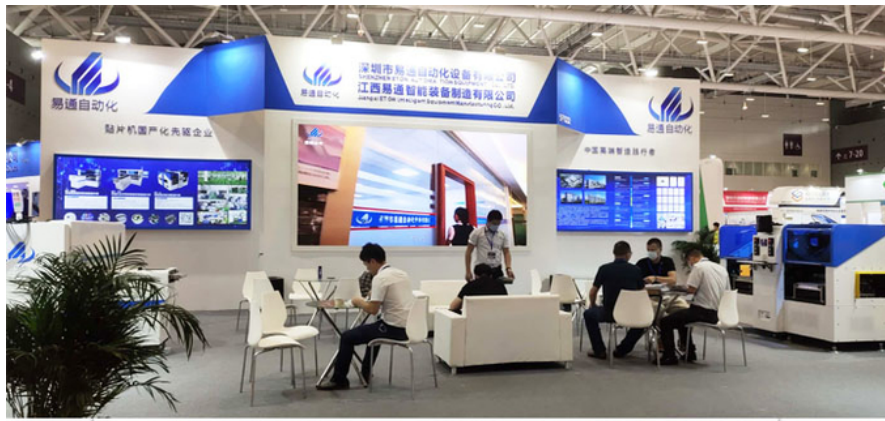


Company style

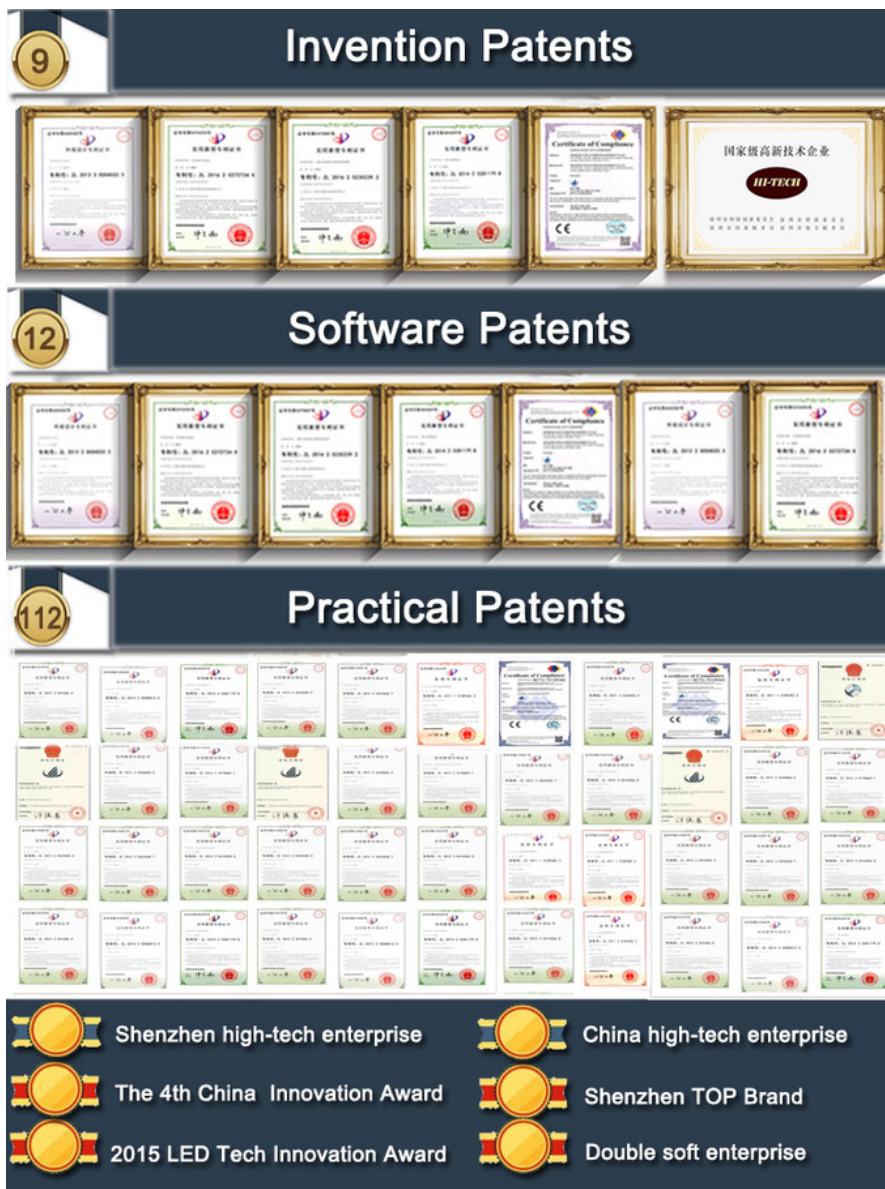


In order to let customers in more countries see our machines. So many industry exhibitions have our presence. Next time, can you also visit our machines?

In many exhibitions, we have been affirmed and favored by customers, such as Thailand Exhibition, Turkey exhibition, India Mumbai and Delhi exhibition, Pakistan exhibition and so on



Certification of honor, Quality management certificate, patent certificate are available in all varieties.



After sale service

Service office in India

Installation service, one-year warranty

Carefully Packaging System

Three step packaging, waterproof, moisture-proof, anti-collision and safe arrival



Step one



Step two



Step three



Step four

Packaging

All machines are packed with vacuum and wooden packing

Step1:Film packaging.

Step2:Vacuum packaging.

Step3:Wooden box packaging

You can trust us, because we have professional and standard packaging to protect the machine.

FAQ

Q: What is your actual speed of your products?

A: For the actual speed of the machine which is constrained by many factors,that relatedto the number of the components, the time to send PCB board and receive the board that will have influence on the speed when in production, and is decide for the actual products and needs.

Q: Can I go and see if you have sold the equipment to India?

A: Yes, we have sold our machine in India, but for the fact we can't decide it for our customer, but I will try to contact our customer. Hope you can understand, because no one wants their competitors to visit their manufacturing site.

Contact David

Whatsapp/Wechat: **+86 13827425982**



Shenzhen Eton Automation Equipment Co., Ltd.

☎ 0086 13670197725 (Whatsapp/Wechat)

✉ linda@eton-mounter.com

🌐 smtmountingmachine.com

HENG FENG INDUSTRIAL AREA,ZHOUSHI ROAD NO. 739,HEZHOU COMMUNITY,HANGCHENG STREET,BAOAN,SHENZHEN,CHINA