



## 45000CPH 12 Heads 28 Feeders Led Bulb SMT Making Machine Lighting Production Line

### Our Product Introduction

for more products please visit us on [smtmountingmachine.com](http://smtmountingmachine.com)

#### Basic Information

- Place of Origin: CHINA
- Brand Name: ETON
- Certification: CCC, CE, SIRA
- Model Number: HT-E8S-1200
- Minimum Order Quantity: 1 SET
- Packaging Details: Vacuum wooden case
- Delivery Time: 20 working days
- Payment Terms: T/T
- Supply Ability: 50 set per month



#### Product Specification

- Warranty: 1 Year
- Applicable Components: 0402
- Name: SMT Pick And Place Machine
- Application: SMD Production Line, SMT Mounting Shooter Machine, SMT Production Line, for SMT Machine
- Condition: New, 100% Original, Brand-new
- Product Name: Place Machine \ LED Mounter \ LED Assembly Machine
- Mounting Speed: 45000 CPH
- Feeders: 28
- Highlight: 28 feeders SMT Making Machine, Led Bulb Lighting Production Line, 12 Heads SMT Making Machine



#### More Images



## Product Description

### Product details

### Technical parameter

Mounting Heads	12 Heads
No. of Feeder Stations	28 Feeders
Components	LED, capacitors, resistors, shaped components, IC, etc.
Mounting Speed	45000CPH
Components Size	Max height:15MM Min:0402
Power	380V 50Hz
X.Y Axis Driving	High-end magnetic Linear motor + servo motor

### Machine Parts

# ETON

Single moudle magnetic linear motor  
Multifunctional Pick and Place machine

## HT-E8S-1200

**Product details**

High-end magnetic linear motor + servo motor

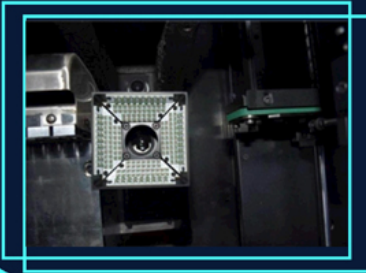
It can ensure the high-speed and stable operation of the equipment, while maintaining the positioning accuracy of the equipment for a long time, and the placement process is smooth and low-noise.

**12 PCS Mounting head**

Each head is controlled by an independent servo motor, which can absorb different components at the same time, which is suitable for mounting a variety of products.

Independent R&D software

Touch screen monitor  
Chinese and English interface, easy to  
operate  
Independent software research and  
development



Vision system + Vision camera

Vision alignment flight identification,  
Mark correction, accurate  
identification of components, saving  
time and improving production  
efficiency to the greatest extent

#### Application

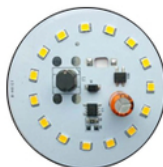
Multi-functional machine can mount many kinds of products, such as DOB, bulb, lens, linear  
bulbs, Led corn light, flexible light  
strip, power driver, panel light, ceiling light, electric board, display screen, down-  
light, streetlight, etc.



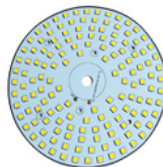
Power driver



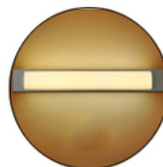
Resistor



DOB



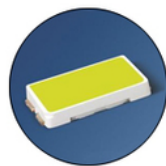
LED chip board



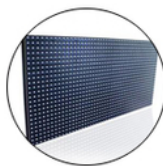
Wall light



LED Flexible strip



LED chip



Display



LED bulb



LED tube



LED spotlight



LED panel



LED downlight



LED street light



LED table light

#### About our company

ETON mission: professionalism, excellent technology, sharing results.

ETON goal: to create a national brand and build an international Chinese enterprise.

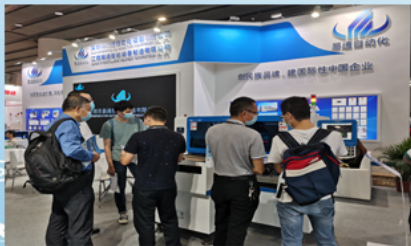
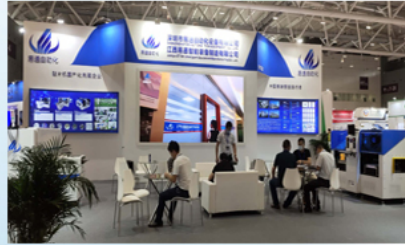
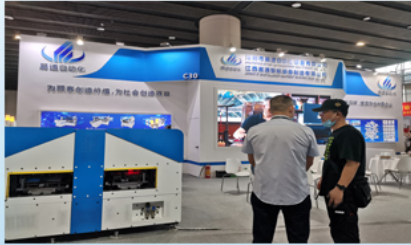
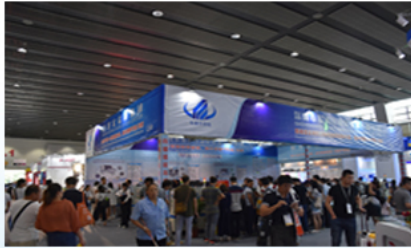
ETON purpose: to create value for customers and create benefits for the society.

ETON vision: determined to become the world's most competitive manufacturer and service  
provider of pick and place machine and high-end electronic testing equipment.

#### Exhibition



## Exhibition



### After-sales service

#### \* Pre-sale

Provide equipment and SMT production lines that meet customers' needs according to customer needs;

Provide relevant suggestions to customers;

#### \* On sale

Real-time follow-up of the production situation of the customer's machine and inform the customer of the production progress

#### \* After sale

1. Arrange engineers to come to the factory to install, debug and teach free of charge;
2. One-year maintenance period. During the maintenance period, any parts that need to be replaced or repaired are free of charge;
3. Every year there is an opportunity for free machine maintenance
4. Visit customers regularly to understand the usage of the machine and collect customer feedback.

### FAQ

Q: How much does the Pick And Place Machine cost?

A: The Pick And Place Machine costs between USD33000 and USD70000.

Q: How is the Pick And Place Machine packaged?

A: The Pick And Place Machine is packaged in a wooden case.

Q: How long does it take to deliver the Pick And Place Machine?

A: It takes 30 days to deliver the Pick And Place Machine.

Q: What payment terms are available for the Pick And Place Machine?

A: The payment terms for the Pick And Place Machine are T/T, LC.

### Contact David

Whatsapp/Wechat: +86 13827425982



# ETON GROUP



## ABOUT US

Shenzhen ETON Automation Equipment Co., Ltd. was founded in 2011. ETON is the leading manufacturer of global optoelectronic highspeed pick and place machine, Full SMT line. the products are exported to more than 20 countries and regions, including South Korea, India, Vietnam, Tunisia, Egypt, Turkey, Russia, Brazil etc.



Testing workroom



Exhibition



ETON industrail park





Our products are exported to more than **30** countries & regions  
 Such as South Korea, Turkey, Egypt, India, Russia, America, Brazil, Tunisia,  
 Poland, Lithuania, South Africa, Iran, Vietnam, Pakistan , Saudi Arabia,  
 Uzbekistan, Nigeria , Germany, etc.

















 富士集团 NVC	 三維·极光 PAK	 SKYQUAD	 SURYA	 HAVELLS
 POLYCAB	 ORIENT	 SIGNIFY	 RANG DONG	 RK
 佛山照明 FSL	 KONARK	 KENDAL	 MLS	 TCL



**Shenzhen Eton Automation Equipment Co., Ltd.**



0086 13670197725 (Whatsapp/Wechat)



[linda@eton-mounter.com](mailto:linda@eton-mounter.com)



[smtmountingmachine.com](http://smtmountingmachine.com)

HENG FENG INDUSTRIAL AREA, ZHOUSHI ROAD NO. 739, HEZHOU COMMUNITY, HANGCHENG  
 STREET, BAOAN, SHENZHEN, CHINA