



Shenzhen Eton Automation Equipment Co., Ltd.

smtmountingmachine.com

220AC Voltage SMT Mounting Machine for Pcb Max Size 500*450mm and 2080kg Weight

Our Product Introduction

more products please visit us on smtmountingmachine.com

Basic Information

- Brand Name: ETON
- Certification: CE,CCC,SIRE
- Model Number: YT10S
- Minimum Order Quantity: 1
- Packaging Details: WOODEN CASE
- Delivery Time: 15 DAYS
- Payment Terms: T/T
- Supply Ability: 50/PER MOUNTH

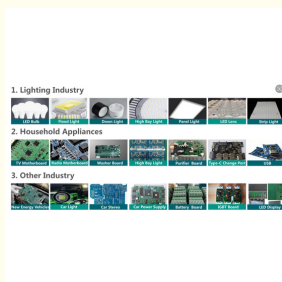


Product Specification

- Application: Electronic Manufacturing
- Pcb Max Size: 500*450mm
- Applicable Components: 0201,0402,0805,0603,1206,SOP
- Driver Way: Magnetic Linear Motor
- Visual Camera: 3 Sets Camera
- Mode Of Transportation: Sea/railway/air
- Delivery: 15
- Speed: 48000CPH
- Highlight: Pcb SMT Mounting Machine,
SMT Mounting Machine for Pcb,
220AC SMT Mounting Machine



More Images



Product Description

Product Description:

Introducing our state-of-the-art SMT Mounting Machine, the ultimate solution for precision LED chip mounting in the production of LED lights. This advanced LED chip mounter is designed to optimize efficiency and accuracy, ensuring seamless operation in LED light manufacturing processes.

With a remarkable speed of 48000CPH (chips per hour), our SMT Mounting Machine stands out as a high-performance tool that can significantly boost productivity in LED production lines. This impressive speed allows for swift and efficient placement of various components, enhancing overall manufacturing output.

Weighing 2080kg, this LED chip mounter is built to be sturdy and reliable, providing stability during operation for consistent and precise component mounting. The durable construction of the machine ensures long-term performance and minimizes the risk of errors, making it a valuable asset for LED light making businesses.

Operating at a voltage of 220AC, our SMT Mounting Machine is designed to meet the power requirements of industrial settings, offering a reliable and consistent power supply for uninterrupted operation. This voltage specification ensures compatibility with standard power systems, making integration into existing manufacturing setups seamless.

When you choose our SMT Mounting Machine, you can expect prompt delivery within 15 days, ensuring that you can quickly integrate this cutting-edge equipment into your LED production facility. Our commitment to timely delivery reflects our dedication to customer satisfaction and operational efficiency, allowing you to streamline your manufacturing processes without delay.

The versatility of our LED chip mounter is evident in its compatibility with a wide range of components, including 0201, 0402, 0805, 0603, 1206, and SOP. This broad applicability makes the machine suitable for handling various component sizes and types commonly used in LED light assembly, providing flexibility and adaptability to diverse production requirements.

In conclusion, our SMT Mounting Machine is the ideal choice for businesses seeking a reliable and efficient solution for LED chip mounting in LED light manufacturing. With its impressive speed, robust construction, appropriate voltage specification, quick delivery time, and compatibility with a range of components, this LED chip mounter offers a comprehensive package to enhance your production capabilities and optimize operational efficiency.

Features:

Product Name: SMT Mounting Machine

Pcb Max Size: 500*450mm

Mode Of Transportation: Sea/railway/air

Speed: 48000CPH

Application: Electronic Manufacturing

Net Weight: 2080kg

Applications:

Eton YT10S SMT Mounting Machine is a cutting-edge piece of equipment designed for electronic manufacturing applications. With its origins in China, this machine is known for its precision and efficiency in handling a wide range of components including 0201, 0402, 0805, 0603, 1206, and SOP.

The Eton YT10S is ideal for various product application occasions and scenarios. One common use is in the production of LED light making machines. As LED technology continues to advance, the need for high-precision SMT machines like the YT10S becomes crucial in ensuring the quality and performance of LED lighting products.

Moreover, this SMT pick and place machine is suitable for small-scale productions with a minimum order quantity of 1, making it a versatile choice for both large manufacturers and small businesses. Its certification in CE, CCC, and SIRE ensures compliance with international quality standards, giving users peace of mind when integrating this machine into their production lines.

Packaged securely in a wooden case, the Eton YT10S can be transported via sea, railway, or air, offering flexibility in logistics. Its 15-day delivery time, along with payment terms of T/T, makes the acquisition process smooth and efficient for customers. With a supply ability of 50 units per month, Eton ensures a steady availability of this essential equipment for electronic manufacturing.

1. Lighting Industry



2. Household Appliances



3. Other Industry





ETON GROUP



ABOUT US

Shenzhen ETON Automation Equipment Co., Ltd. was founded in 2011. ETON is the leading manufacturer of global optoelectronic highspeed pick and place machine, Full SMT line. the products are exported to more than 20 countries and regions, including South Korea, India, Vietnam, Tunisia, Egypt, Turkey, Russia, Brazil etc.



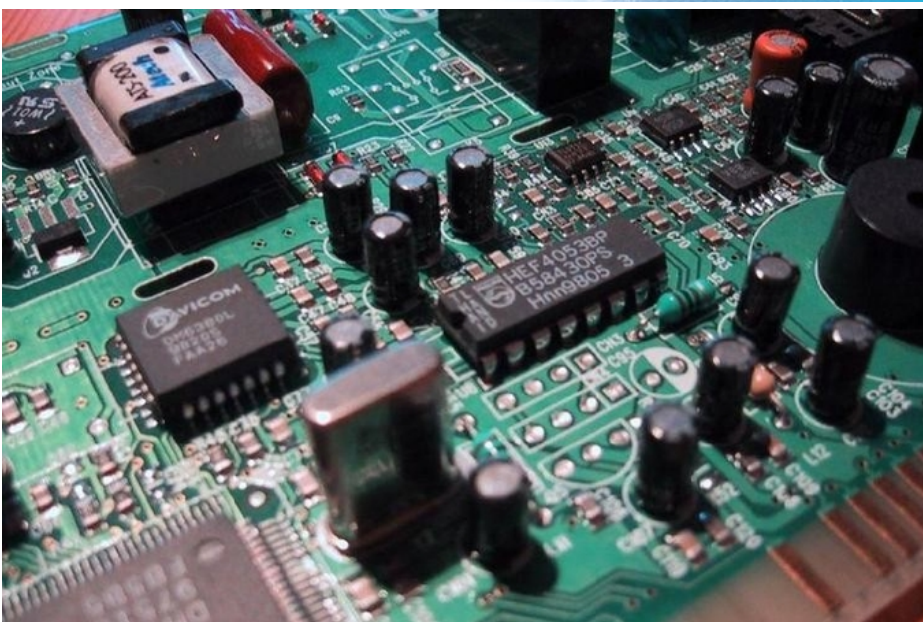
Testing workroom



Exhibition



ETON industrail park



Packing and Shipping:

Product Packaging and Shipping for SMT Mounting Machine:

The SMT mounting machine is carefully packaged to ensure safe delivery to our customers. Each unit is securely placed in a sturdy cardboard box with ample cushioning material to prevent any damage during transportation.

For shipping, we partner with trusted carriers to deliver the SMT mounting machine to your desired location. Our team takes great care in handling the shipment to guarantee that your product arrives in perfect condition.

FAQ:

Q: What are the certifications for this SMT Mounting Machine?

A: This SMT Mounting Machine is certified with CE, CCC, and SIRE.

Q: How is this SMT Mounting Machine packaged for delivery?

A: This SMT Mounting Machine is packaged in a wooden case.

Q: What is the delivery time for this SMT Mounting Machine?

A: The delivery time for this SMT Mounting Machine is 15 days.

Q: What are the payment terms for purchasing this SMT Mounting Machine?

A: The payment terms for purchasing this SMT Mounting Machine are T/T.

Q: What is the supply ability of this SMT Mounting Machine per month?

A: The supply ability of this SMT Mounting Machine is 50 units per month.



Shenzhen Eton Automation Equipment Co., Ltd.



0086 13670197725 (Whatsapp/Wechat)



linda@eton-mounter.com



smtmountingmachine.com

HENGFENG INDUSTRIAL AREA,ZHOUSHI ROAD NO. 739,HEZHOU COMMUNITY,HANGCHENG
STREET,BAOAN,SHENZHEN,CHINA