



Multi-Functional High Speed High-end Magnetic Linear Motor Pick And Place Machine

Our Product Introduction

for more products please visit us on smtmountingmachine.com

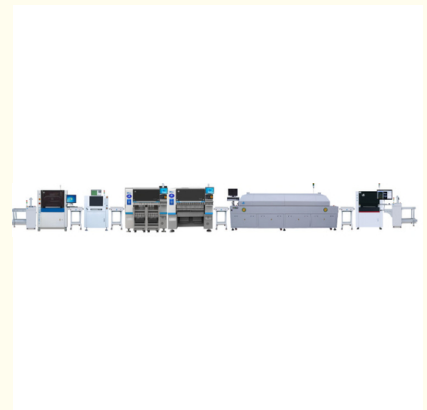
Basic Information

- Place of Origin: Guangdong China
- Brand Name: ETON
- Certification: 3CSIRACE
- Model Number: YT20S
- Minimum Order Quantity: 1 set
- Packaging Details: vacuum packaging wooden box packaging
- Delivery Time: within 2 weeks
- Payment Terms: T/T
- Supply Ability: 50 units a month



Product Specification

- Highlight: high speed pick and place machine,
linear motor pick and place machine,
Multi-Functional pick and place machine



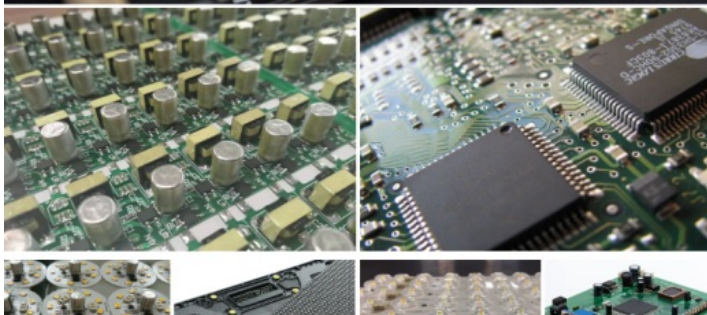
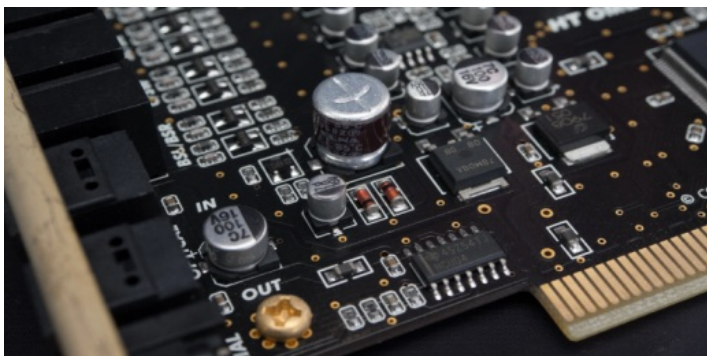
Product Description

Automatic smt production line /led lamp production solution /PCBA factory



SMT production line solution application

Suitable for 0201 ~ 15*15 mm Packaging material (optional fixed identification camera 0201~40*40mm) and ic tray material
Application products: 3C products, power driver, home circuit control board, DOB bulb, light emitting diode



significant attribute
Industry attribute

| | |
|-------|------|
| Brand | ETON |
|-------|------|

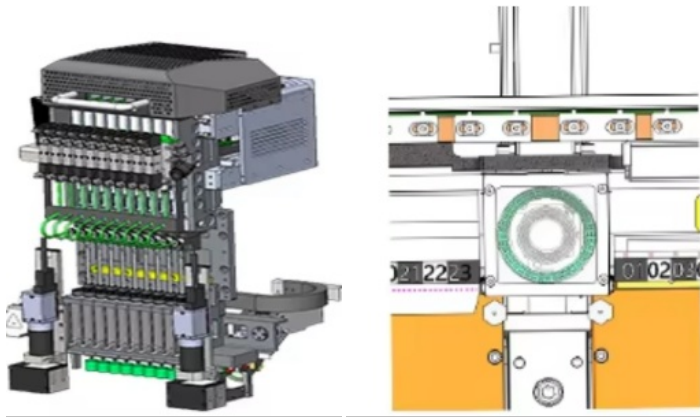
Other attributes

| | |
|------------------|----------------------|
| weight | 2200kg |
| guarantee period | One year |
| source area | Guangdong, China |
| model | YT20S |
| Size | 1480mm*2680mm*1650mm |
| software | R&D independently |

Factory information

| | |
|---------|--|
| factory | 52000 INDUSTRIAL PARK 7 BUILDINGS 500+ STAFF |
| Port | shenzhen |

product description



Option function

Various options contribute to flexible production



Feed car

One feed truck can accommodate 23

Integrated circuit cabinet

Supports 20 layers of pallets, with the ability to switch freely

Fixed the flight vision camera

Visual calibration of image position, alignment correction, light source brightness can be adjusted

Machine highlight

High speed multi-module head

High speed multi-module header. Suitable for ultra-small chips 0201-40 * 40mm large chips. Wider range of components

New flying vision camera

Improve recognition performance with sizes up to 40mm by 40mm for BGA or CSP, etc

Vacuum sensing device

Each placement head has an independent detection function, which improves the stability of the equipment and the reliability of the product.

Specification

| | |
|--------------------|--|
| PCB length width | Dual module and dual track: Max: 500x300 mm Min: 50x50 mm Single module and single guide: Max: 500x450 mm Min: 50x50 mm |
| Installation speed | 98000 CPH (under the best conditions of our company) |
| air feed | 0.4-0.6Mpa (4-6Kgf/) |
| Transmission mode | On-line drive |
| Position mode | optics |

After-sales service

For SMT factory setup, we can do for you:

1. We provide you with complete SMT solutions
2. We provide the core technology for our equipment
3. We provide the most professional technical services
4. We have rich experience in SMT factory setup
5. We can solve any problems related to SMT



company profile



ETON is the largest SMT machine manufacturer in China with an industrial park of more than 2,000 square meters. ETON has more than 14 years of R&D experience in the SMT industry equipped with core technologies. ETON develops the world's first automatic stenograph press roll-to-roll 100-meter LED strip lamp.

Packing

Remark

1. Terms of payment: 30% deposit, 70% balance should be paid before T/T shipment.
 2. Delivery time: 30 days after deposit.
- Warranty: 1 year. (including spare parts)

Package&Delivery
ETON






Package:

- Standard export vacuum waterproof package;
- Strong wooden package for ensure safely delivery of heavy and large equipment;

Delivery:

- By air:for small package , worldwide express like DHL,UPS,Fedex,EMS...
- By sea, for large package and quantity;
- By railway or other ways as customer requested;



Shenzhen Eton Automation Equipment Co., Ltd.



0086 13670197725 (Whatsapp/Wechat)



linda@eton-mounter.com



smtmountingmachine.com

HENGFENG INDUSTRIAL AREA,ZHOUSHI ROAD NO. 739,HEZHOU COMMUNITY,HANGCHENG
STREET,BAOAN,SHENZHEN,CHINA