



Higher Efficiency Surface Light Emitting Diode SMT Mounter for the German Market

Our Product Introduction

For more products please visit us on smtmountingmachine.com

Basic Information

- Place of Origin: Shenzhen, China
- Brand Name: ETON
- Certification: CE, SIRA, CCC, ISO
- Model Number: HT-E6T-600
- Minimum Order Quantity: 1 UNIT
- Price: USD10000~43000USD per Unit
- Packaging Details: Standard export wooden case package (Can do as customers' requirement)
- Delivery Time: Within 15 days after receive the downpayment
- Payment Terms: T/T, L/C, Western Union, MoneyGram, D/P
- Supply Ability: 30 UNIT per month



Product Specification

- Option Function: Various Options Contribute To Achieving Flexible Production, One Feeding Vehicle Can Accommodate 23, Supports 20-layer Pallets And Has The Ability To Switch Freely, Visual Calibration Of Image Position, Alignment Correction, And Adjustable Light Source
- FAQ: Q1: What Is The Failure Rate Of The Machine? Answer: Our Machine Is Very Stable, With A Failure Rate Of Less Than 0.001. Q2: I Have Never Used A Surface Mount Technology (SMT) Machine Before. Is It Easy To Operate? Answer: The Machine Is Easy To Operate. U
- Product Name: 98,000 CPH Light-emitting Diode Surface Pick And Place Machine



Product Description

Product Description:

Product Summary:

The Surface Mount Assembly Equipment - 98,000 CPH light-emitting Diode surface pick and place machine is a high-tech PCB Mounting System designed to meet the demanding needs of modern electronics manufacturing. With its advanced features and capabilities, this Pick and Place Machine offers exceptional performance and flexibility for various production requirements.

Option function: The machine comes with various options that contribute to achieving flexible production. One feeding vehicle can accommodate up to 23 components, supporting 20-layer pallets and allowing for seamless switching between different setups. Visual calibration of image position, alignment correction, and adjustable light source brightness are carried out to ensure precise and accurate placement of components.

FAQ:

Q1: What is the failure rate of the machine?

Answer: Our machine is very stable, with a failure rate of less than 0.001.

Q2: I have never used a surface mount technology (SMT) machine before. Is it easy to operate?

Answer: The machine is easy to operate. Usually, 3 to 5 days of operation training is sufficient.

Q3: What is the minimum order quantity?

Answer: One machine. Mini orders are also welcome.

Q4: Is the interface of your software in English?

Answer: Both the English interface and the Chinese interface are available.

Q5: What are the payment terms? What about trade terms?

Answer: T/T is fine. You can choose the FOB Shenzhen.

Q6: What are the differences between dual-module and single-module?

Answer: The dual-module model has one more module than the single-module model, offering greater capacity and higher efficiency.

Apply: Suitable for 0201 ~ 35 * 35mm roll tape packaging and integrated circuit tray paper feeder; Application products: 3C products, power drivers, household circuit control boards, DOB bulbs, LED lamps, etc.

Market: Our equipment is exported to over 30 countries and regions, such as South Korea, Turkey, Egypt, India, Russia, the United States, Brazil, Tunisia, Poland, Lithuania, South Africa, Iran, Pakistan, Saudi Arabia, Uzbekistan, Nigeria, Germany, etc.

Features:

Product Name: 98,000 CPH light-emitting Diode surface pick and place machine

FAQ:

Q1: What is the failure rate of the machine? Answer: Our machine is very stable, with a failure rate of less than 0.001.

Q2: I have never used a surface mount technology (SMT) machine before. Is it easy to operate? Answer: The machine is easy to operate. Usually, 3 to 5 days of operation training is sufficient.

Q3: What is the minimum order quantity? A: One machine. Mini orders are also welcome.

Q4: Is the interface of your software in English? Answer: Both the English interface and the Chinese interface are available.

Q5: What are the payment terms? What about trade terms? Answer: T/T is fine. You can choose the FOB Shenzhen.

Q6: What are the differences between dual-module and single-module? Answer: The dual-module model has one more module than the single-module model, offering greater capacity and higher efficiency.

Machine highlights: High-speed multi-module head, Brand-new flight vision camera, Vacuum sensing device, Ultra-high-speed capability

Product Category: SMT Mounting Machine

Apply: Suitable for 0201 ~ 35 * 35mm roll tape packaging and integrated circuit tray paper feeder; Application products: 3C products, power drivers, household circuit control boards, DOB bulbs, LED lamps, etc

Technical Parameters:

Product Name	98,000 CPH light-emitting Diode surface pick and place machine
Product Category	SMT Mounting Machine

Applications:

Product Application Occasions and Scenarios for the ETON SMT Mounting Machine (Model: HT-E6T-600):

The ETON SMT Mounting Machine is a versatile and efficient solution for a wide range of applications in electronics manufacturing. With its high-speed multi-module head, brand-new flight vision camera, vacuum sensing device, and ultra-high-speed capability, this machine is ideal for various Product Application Occasions and Scenarios, including:

Printed Circuit Board Soldering Machine: The ETON SMT Mounting Machine is perfect for accurately placing components on printed circuit boards, ensuring precise soldering and assembly.

Light Emitting Diode Application: This machine is well-suited for LED applications, such as mounting components onto LED lamps with high precision and efficiency.

Pick and Place Machine: The ETON SMT Mounting Machine excels as a pick and place machine, handling components ranging from 0201 to 35 * 35mm on roll tape packaging and integrated circuit tray paper feeders.

It is designed to work seamlessly with a variety of products, including 3C products, power drivers, household circuit control boards, DOB bulbs, LED lamps, and more. The machine offers stable performance with a low failure rate of less than 0.001, making it a reliable choice for electronics manufacturing.

With certifications including CE, SIRA, CCC, and ISO, you can trust the quality and safety of the ETON SMT Mounting Machine. It is

manufactured in Shenzhen, China, and can be ordered with a minimum quantity of 1 unit at a price range of USD 10000 to 43000 per unit.

Payment terms are flexible, including T/T, L/C, Western Union, MoneyGram, and D/P, with a supply ability of 30 units per month. Delivery is quick, typically within 15 days after receiving the downpayment, and the machine is carefully packaged in standard export wooden cases (custom packaging available).

For any inquiries or assistance, feel free to reach out to us. We provide comprehensive after-sales service, offering a complete SMT solution, core technologies, professional technical services, and expertise in setting up SMT factories. We are dedicated to solving any SMT-related issues and ensuring customer satisfaction.

Product Category: SMT Mounting Machine

Machine Highlights: High-speed multi-module head, Brand-new flight vision camera, Vacuum sensing device, Ultra-high-speed capability

Support and Services:

Our SMT Mounting Machine product comes with comprehensive Product Technical Support and Services to ensure smooth operation and maximum efficiency. Our team of experts is available to provide assistance with installation, troubleshooting, and maintenance of the machine. Additionally, we offer training programs to help operators familiarize themselves with the machine and optimize its performance.

Packing and Shipping:

Product Packaging:

The SMT Mounting Machine is carefully packaged in a sturdy cardboard box with foam inserts to ensure safe transportation. Each component is individually wrapped to prevent any damage during shipping.

Shipping:

We offer free shipping for the SMT Mounting Machine to all our customers. The product will be shipped via a trusted courier service and you will receive a tracking number to monitor the delivery status. Please allow 3-5 business days for the product to reach you.

FAQ:

Q: What is the brand name of the SMT Mounting Machine?

A: The brand name of the SMT Mounting Machine is ETON.

Q: What is the model number of the SMT Mounting Machine?

A: The model number of the SMT Mounting Machine is HT-E6T-600.

Q: Where is the SMT Mounting Machine manufactured?

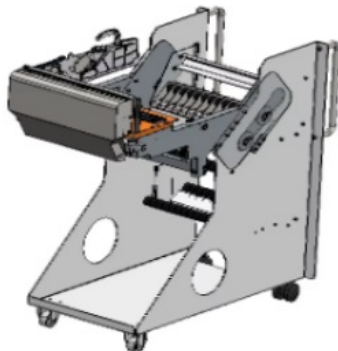
A: The SMT Mounting Machine is manufactured in Shenzhen, China.

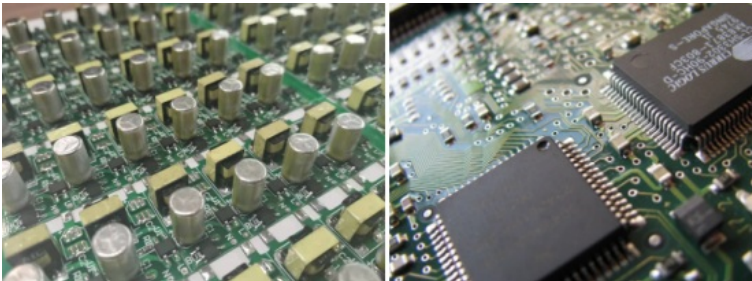
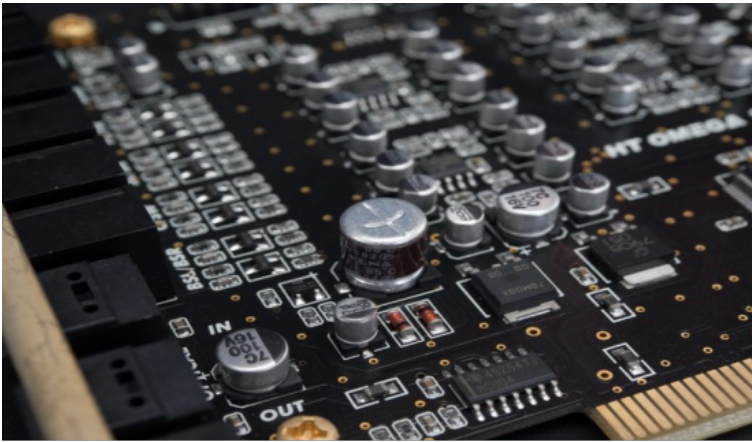
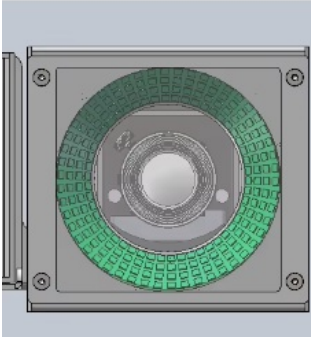
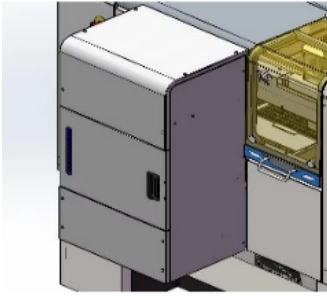
Q: What is the minimum order quantity for the SMT Mounting Machine?

A: The minimum order quantity for the SMT Mounting Machine is 1 unit.

Q: What are the available payment terms for purchasing the SMT Mounting Machine?

A: The available payment terms for purchasing the SMT Mounting Machine are T/T, L/C, Western Union, MoneyGram, and D/P.







Shenzhen Eton Automation Equipment Co., Ltd.



0086 13670197725 (Whatsapp/Wechat)



linda@eton-mounter.com



smtmountingmachine.com

HENGFENG INDUSTRIAL AREA,ZHOUSHI ROAD NO. 739,HEZHOU COMMUNITY,HANGCHENG STREET,BAOAN,SHENZHEN,CHINA