



Shenzhen Eton Automation Equipment Co., Ltd.

smtmountingmachine.com

Affordable Pick and Place Machine with 10pcs Heads and Free Overseas Engineers Installation and Training Assistance

Our Product Introduction

more products please visit us on smtmountingmachine.com

Basic Information

- Place of Origin: Shenzhen, China
- Brand Name: ETON
- Certification: CE, SIRA, CCC, ISO
- Model Number: HT-E6T-600
- Minimum Order Quantity: 1 UNIT
- Price: USD10000~43000USD per Unit
- Packaging Details: Standard export wooden case package (Can do as customers' requirement)
- Delivery Time: Within 15 days after receive the downpayment
- Payment Terms: T/T, L/C, Western Union, MoneyGram, D/P
- Supply Ability: 30 UNIT per month



Product Specification

- Integrated Placement Head: Design With Independent Control Of 10 Groups Of Z-axes By Modular Magnetic Linear Motor
- ETON Service: Free Installation And Training By Overseas Engineers
- No. Of Feeder Station: 52pcs
- PCB Thickness: 0.5-5mm
- Total Weight: 1850kg
- PCB Length Width High: 1480mm X 2190mm X 1650mm
- Exported To: More Than 30 Countries And Regions Including South Korea, Turkey, Egypt, India, Russia, The United States, Brazil, Tunisia, Poland, Lithuania, South Africa, Iran, Pakistan, Saudi Arabia, Uzbekistan, Nigeria, Germany, Etc.

Product Description

Product Description:

One of the standout features of this machine is its double drive gantry structure, where the Y-axis is double driven by a high-end magnetic linear motor. This innovative design ensures higher stability and accuracy during the mounting process, making it ideal for high-precision SMT assembly.

As a leading brand in the industry, ETON delivers exceptional quality and performance with its SMT Mounting Machine. The machine is built to meet the demands of modern electronics manufacturing, offering reliable and consistent results.

When you choose the ETON SMT Mounting Machine, you not only get a top-of-the-line product but also benefit from excellent service. ETON provides free installation and training by overseas engineers, ensuring that your team is fully equipped to operate the machine efficiently and effectively.

The SMT Mounting Machine is versatile and can accommodate PCB thickness ranging from 0.5mm to 5mm. This flexibility allows you to work with a variety of circuit boards, making it a valuable asset for your production line.

With 52 feeder stations, the ETON SMT Mounting Machine offers ample capacity for handling components and materials, enabling continuous operation without frequent interruptions for reloading. This high level of automation enhances productivity and reduces downtime, contributing to overall efficiency in your manufacturing process.

In conclusion, the ETON SMT Mounting Machine is a reliable and high-performance solution for SMT assembly. Its advanced features, robust construction, and exceptional service make it a standout choice for electronics manufacturers looking to optimize their production processes.

Features:

Product Name: SMT Mounting Machine

No. of feeder station: 52pcs

Precise Angle system: Controls the Angle of each component independently for high precision placement with 10 nozzles per head

Integrated placement head: Design with independent control of 10 groups of Z-axes by modular magnetic linear motor

PCB thickness: 0.5-5mm

ETON Service: Free installation and training by overseas engineers

Technical Parameters:

No. of feeder station	52pcs
Suitable for	High precision electric board, power driver, SMT printed circuit board, etc
Brand	ETON
Double drive gantry structure	Y-axis is double driven by high-end magnetic linear motor for higher stability
Precise Angle system	Controls the Angle of each component independently for high precision placement with 10 nozzles per head
Total weight	1850kg
ETON Service	Free installation and training by overseas engineers
PCB thickness	0.5-5mm
Exported to	More than 30 countries and regions including South Korea, Turkey, Egypt, India, Russia, the United States, Brazil, Tunisia, Poland, Lithuania, South Africa, Iran, Pakistan, Saudi Arabia, Uzbekistan, Nigeria, Germany, etc.
PCB length width high	1480mm x 2190mm x 1650mm

Applications:

SMT Board Mounting Equipment like the ETON HT-E6T-600 is a versatile and essential tool in the electronics manufacturing industry. With certifications such as CE, SIRA, CCC, and ISO, this high-quality machine ensures reliability and performance. Originating from Shenzhen, China, each unit requires a minimum order quantity of 1 unit, with a price range of USD10000 to 43000 per unit.

Whether you are a small-scale electronics workshop or a large-scale manufacturing plant, the ETON HT-E6T-600 is suitable for various application occasions and scenarios. Its flexible PCB thickness compatibility of 0.5-5mm makes it ideal for a wide range of electronic products. The integrated placement head, designed with independent control of 10 groups of Z-axes by modular magnetic linear motor,

ensures precision and efficiency in component placement.

The double drive gantry structure of the ETON HT-E6T-600, with the Y-axis being double driven by a high-end magnetic linear motor, provides stability and accuracy during the assembly process. With a total weight of 1850kg, this machine is robust and durable, capable of handling continuous production cycles.

When it comes to purchasing the ETON HT-E6T-600, customers have the flexibility to choose from various payment terms such as T/T, L/C, Western Union, MoneyGram, and D/P. Additionally, with a supply ability of 30 units per month and a delivery time of within 15 days after receiving the downpayment, customers can rely on timely fulfillment of their orders.

Furthermore, ETON provides excellent service to its customers, offering free installation and training by overseas engineers. The machine is carefully packaged in standard export wooden cases, with the option to customize the packaging based on customers' requirements.

Support and Services:

Our SMT Mounting Machine product comes with comprehensive Product Technical Support and Services to ensure smooth operation and maximum performance. Our dedicated team of technical experts is available to assist with any product-related inquiries, troubleshooting, or maintenance needs. Whether you require assistance with installation, training, or ongoing support, we are here to help you every step of the way.

Packing and Shipping:

Product Packaging:

The SMT Mounting Machine is carefully packaged in a sturdy cardboard box to ensure its safety during transportation. The machine is secured with foam inserts to prevent any damage from bumps or shakes during shipping.

Shipping:

Our company uses reliable shipping services to deliver the SMT Mounting Machine to your location. We ensure that the product is well-protected and properly sealed to prevent any external elements from causing harm during transit. Tracking information will be provided so you can monitor the delivery status of your order.

FAQ:

Q: What is the brand name of the SMT Mounting Machine?

A: The brand name is ETON.

Q: What is the model number of the SMT Mounting Machine?

A: The model number is HT-E6T-600.

Q: Where is the SMT Mounting Machine manufactured?

A: The machine is manufactured in Shenzhen, China.

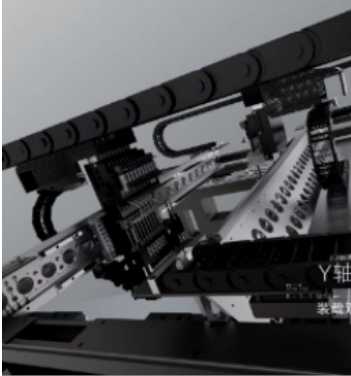
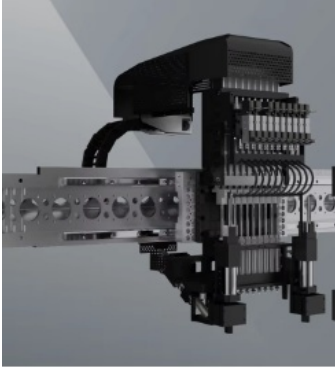
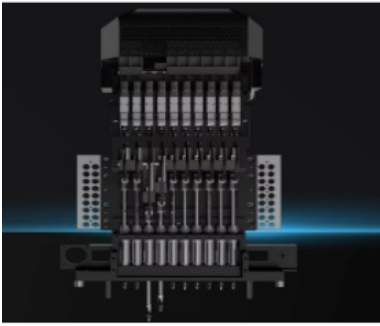
Q: What are the accepted payment terms for purchasing the SMT Mounting Machine?

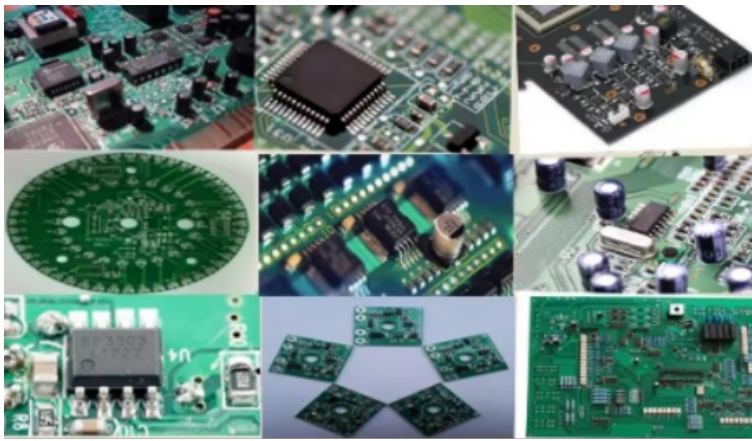
A: The accepted payment terms are T/T, L/C, Western Union, MoneyGram, and D/P.

Q: What is the minimum order quantity for the SMT Mounting Machine?

A: The minimum order quantity is 1 unit.







Shenzhen Eton Automation Equipment Co., Ltd.



0086 13670197725 (Whatsapp/Wechat)



linda@eton-mounter.com



smtmountingmachine.com

HENGFENG INDUSTRIAL AREA,ZHOUSHI ROAD NO. 739,HEZHOU COMMUNITY,HANGCHENG STREET,BAOAN,SHENZHEN,CHINA